

Demographic Summary

Population

2016 Population	12,921
2016 Age Distributions:	
Median Age	42.1
Under 18	2,896
18-64	7,898
65 and over	2,127
2016 Median Household Income	\$41,080

Employment

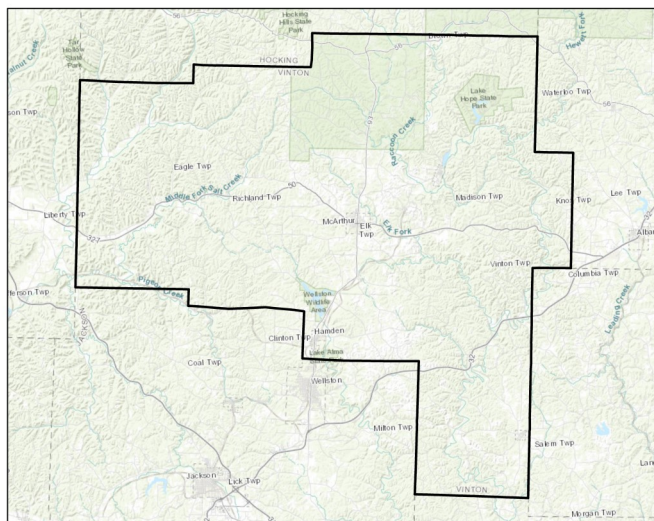
In Labor Force	5,854
Unemployment rate	10.7%

Poverty

Poverty rate:	21.3%
Under 18	32.3%
Families	16.9%
Families with female head of house	41.6%

Housing

Total Units	6,174
Percent Owner Occupied	76.4%
Percent of Owner Occ. with Mortgage	52.8%
Median Gross Rental Cost	\$620



Vinton County, OH
SEO FOODLINK
A PROJECT OF COMMUNITY FOOD INITIATIVES

Resource Summary

Food Assistance Programming

Total Agencies:	8
Food Pantries	2
Congregate Meals	1
Backpack Programs	1
Summer Feeding	4

SNAP

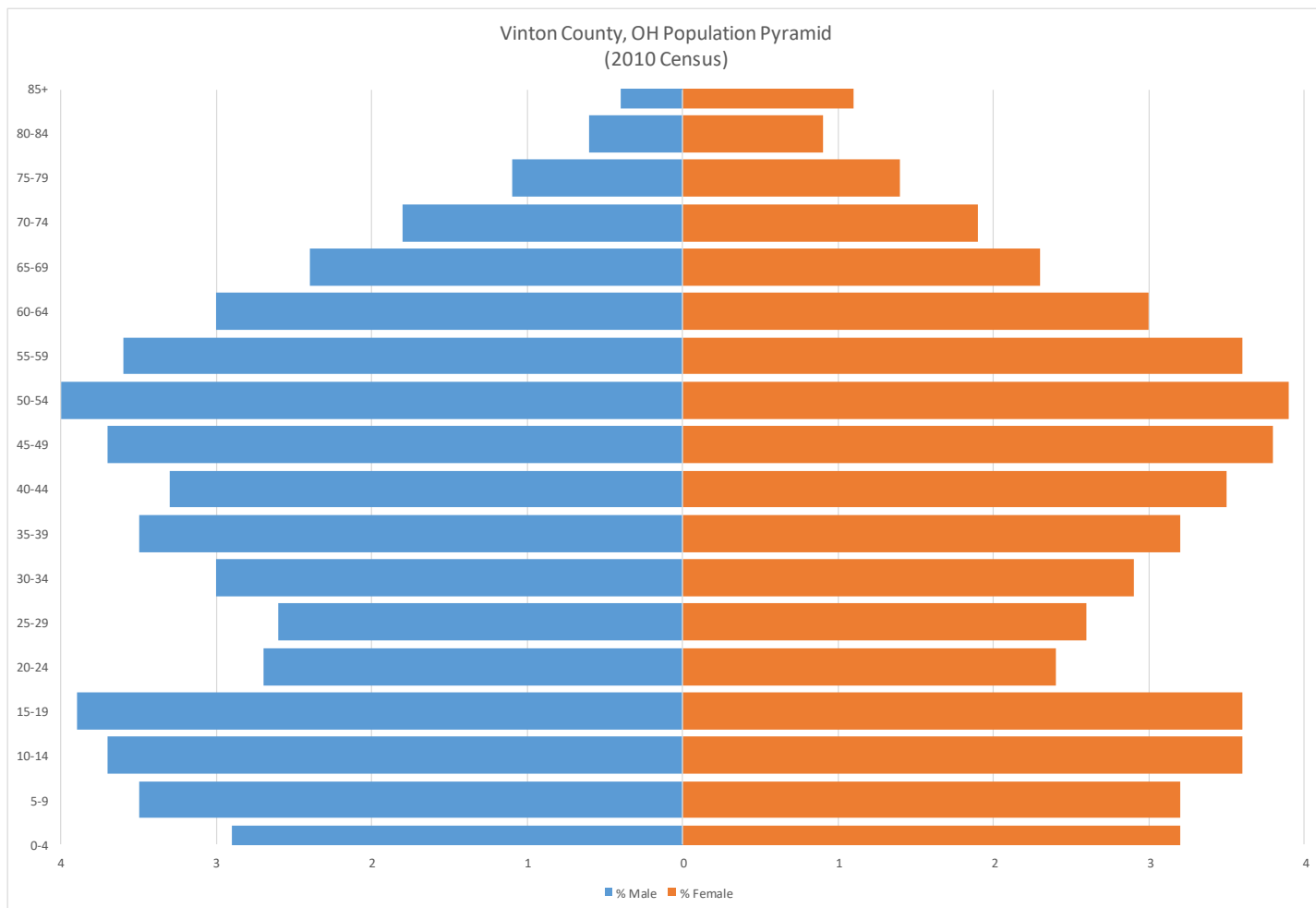
Monthly Enrollment Average	24,753+
Monthly Disbursements (average)	\$2,877,343+
SNAP Retailers	11
Participation rate	21%

WIC

Monthly Caseload Average	448
WIC Retailers	5

Free and Reduced School Meal Programs

Eligible Students:	651
Eligible Student Percentage	30%
Schools Participating in CEP	3



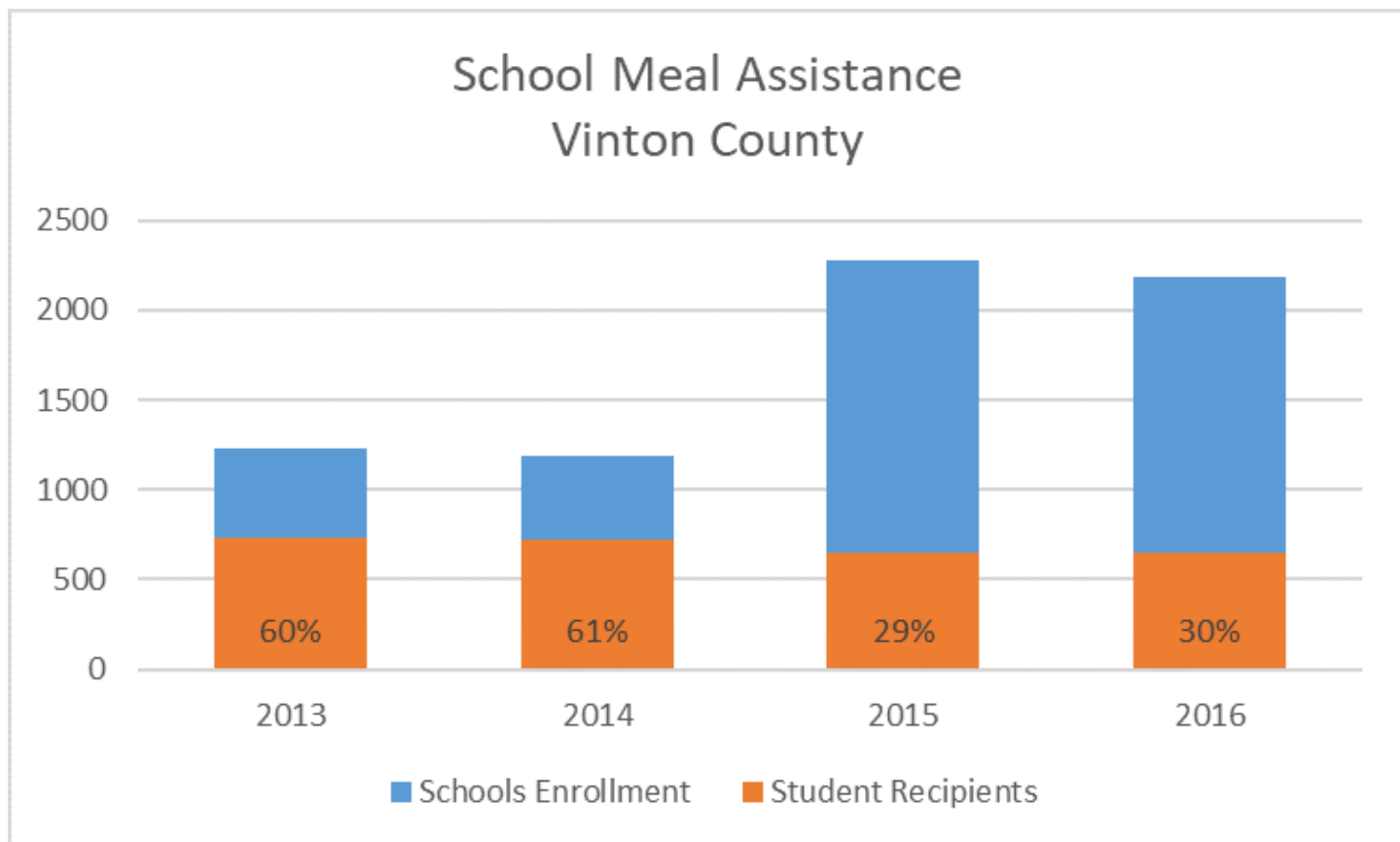
SNAP (2016)	Vinton County 2016	SEO County Average	SEO County Rank
Cases Assisted	12,072 [†]	3,497	1st [†]
Individuals Enrolled	24,753 [†]	7,330	1st [†]
Children Enrolled	0*	2,803	9th [†]
Adults Enrolled	0*	4,794	9th [†]
Percent of Population Enrolled	21%	18%	3th
Total Average Monthly Disbursed	\$2,877,343 [†]	\$1,075,871	1st [†]
Average Stamps Issued	\$116	\$116	5th

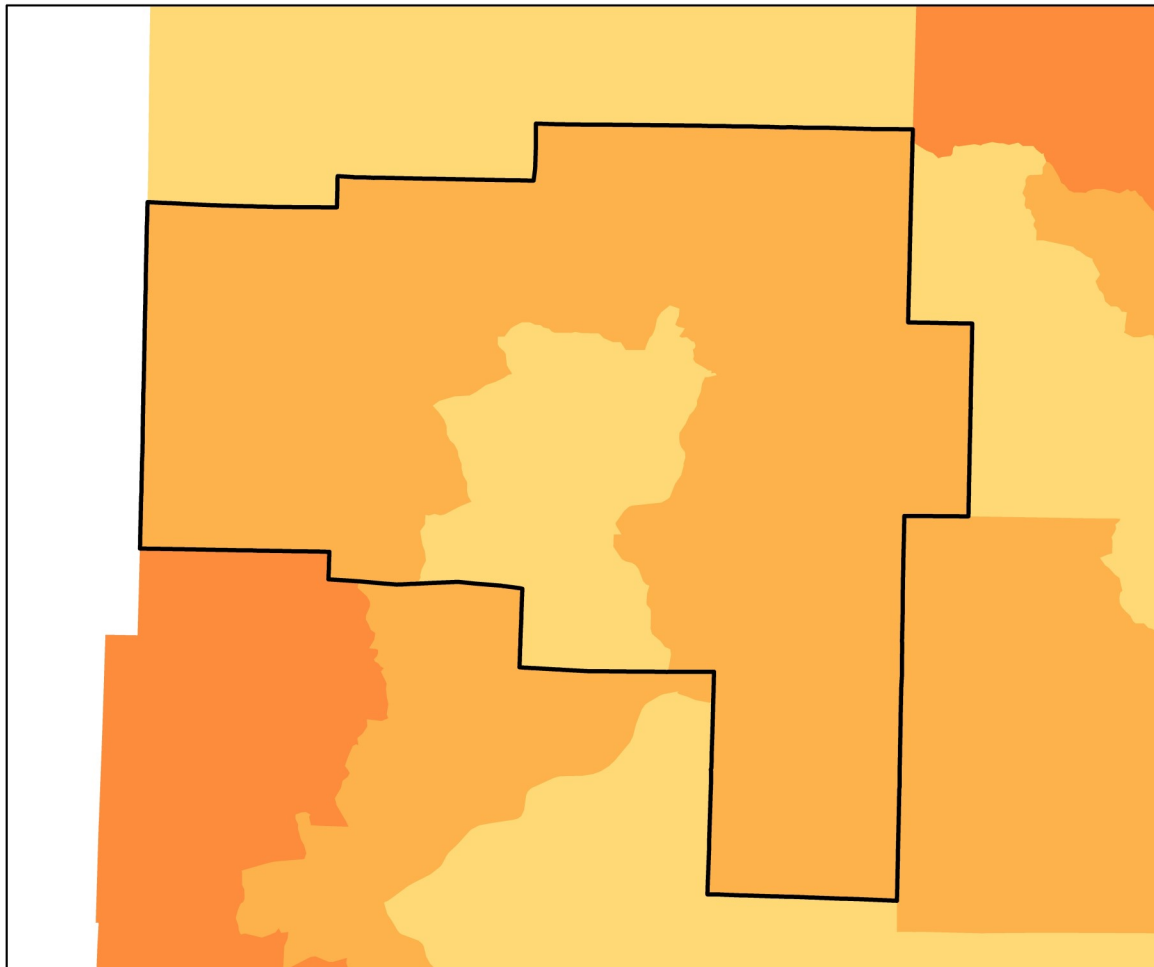
WIC (2016)	Vinton County 2016	SEO County Average 2016	SEO County Rank
Average Monthly Cases*	448	816	9th
Caseload as a Percentage of Residents	3.5%	2.4%	1st

[†] Combined Hocking, Ross and Vinton counties

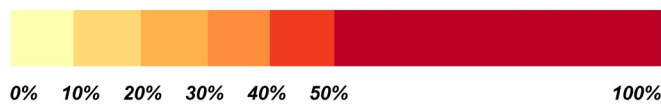
*Not all cases are county residents

	Vinton County 2016	SEO County Average 2016
Schools	5	14
Schools Participating in CEP	3	5
Percent of Schools Participating in CEP	60%	36%
Enrollment	2,185	5,724
Students Eligible for Meal Assistance	651	1,852
Percent Eligible for Assistance	30%	34%





Estimated Percent of Population Experiencing Poverty

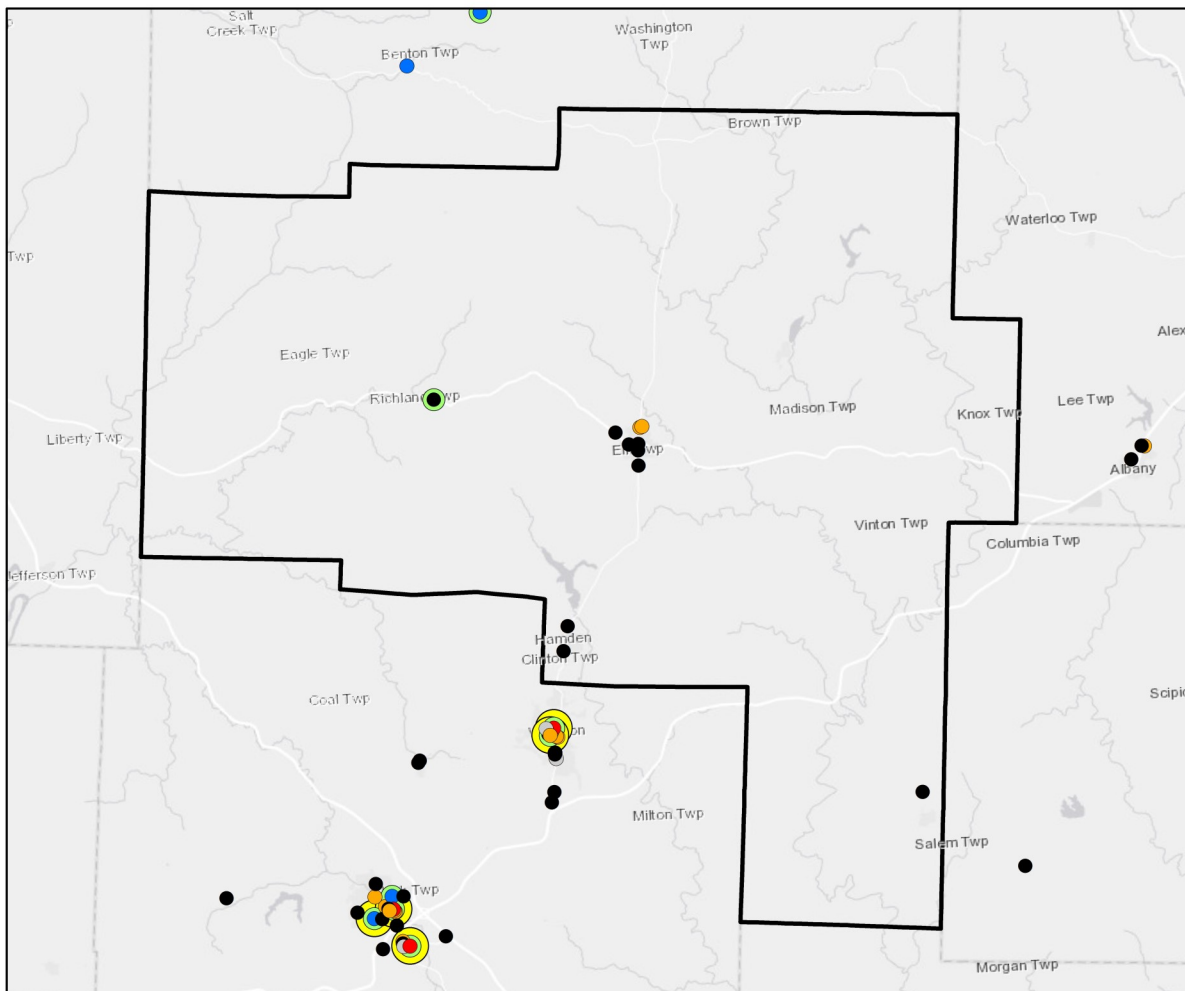


Vinton County, OH

SEO FOODLINK - 2018

2016 Census ACS Annual Estimate

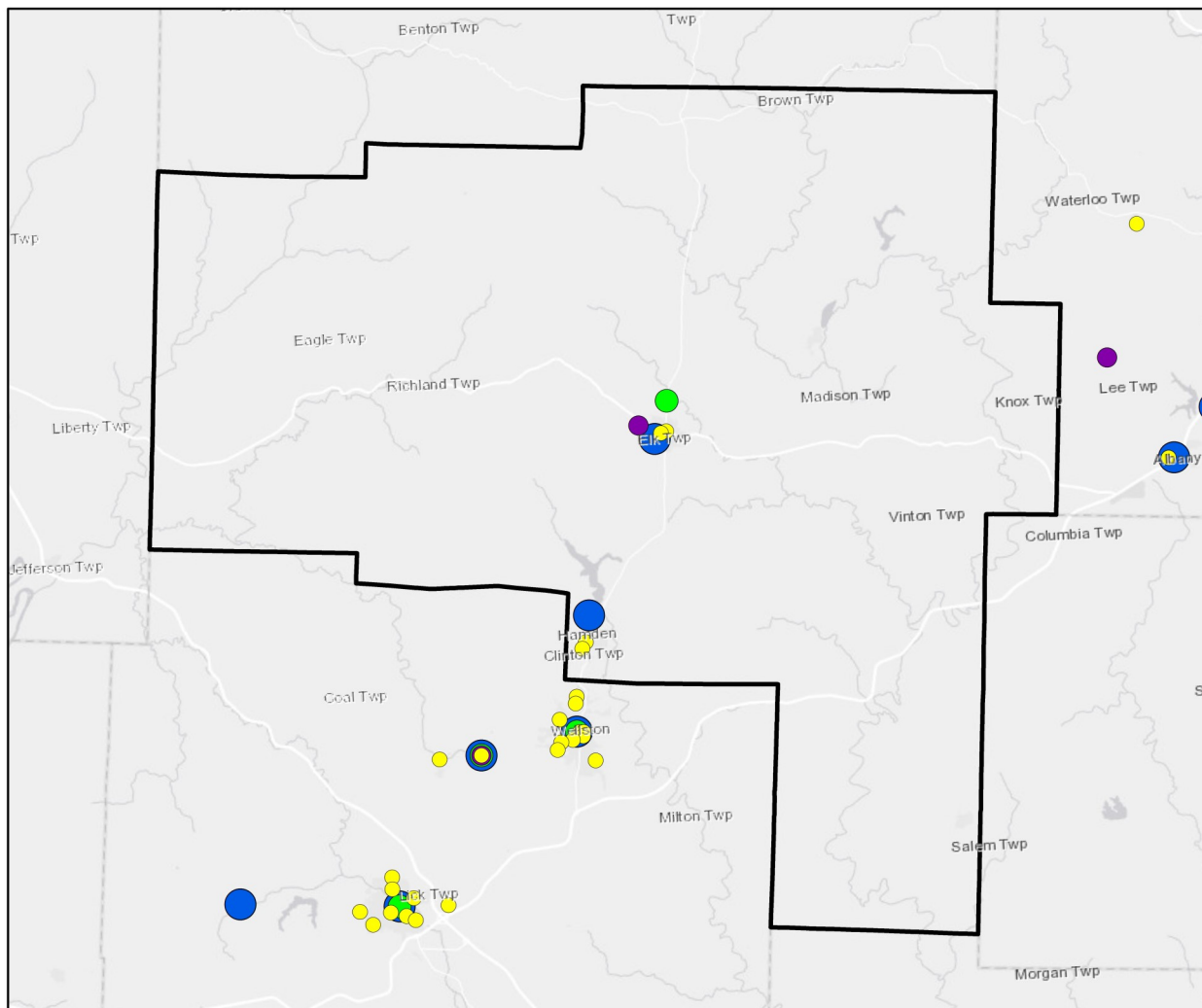
	Vinton County	Ohio	United States
2016 Population Estimate	12,921	11,586,941	318,558,162
Percent in Poverty	21.3%	15.4%	15.1%
Unemployment Rate	10.7%	7.2%	7.4%
Median Household Income	\$41,080	\$50,674	\$55,322



- Big Box
- Grocery Store
- Small Box
- Convenience Store
- Specialty
- Fresh Produce
- Accepts WIC
- Farmer's Market

Vinton County, OH Retail Locations Accepting SNAP

Service Provider	Total in County	WIC	Fresh Produce
Big Box Retailers	0	0	0
Grocery Stores	0	0	0
Small Box Retailers	2	0	0
Convenience Store	9	0	0
Farmers Market	0	0	0
Specialty	0	0	0
Total	11	0	0

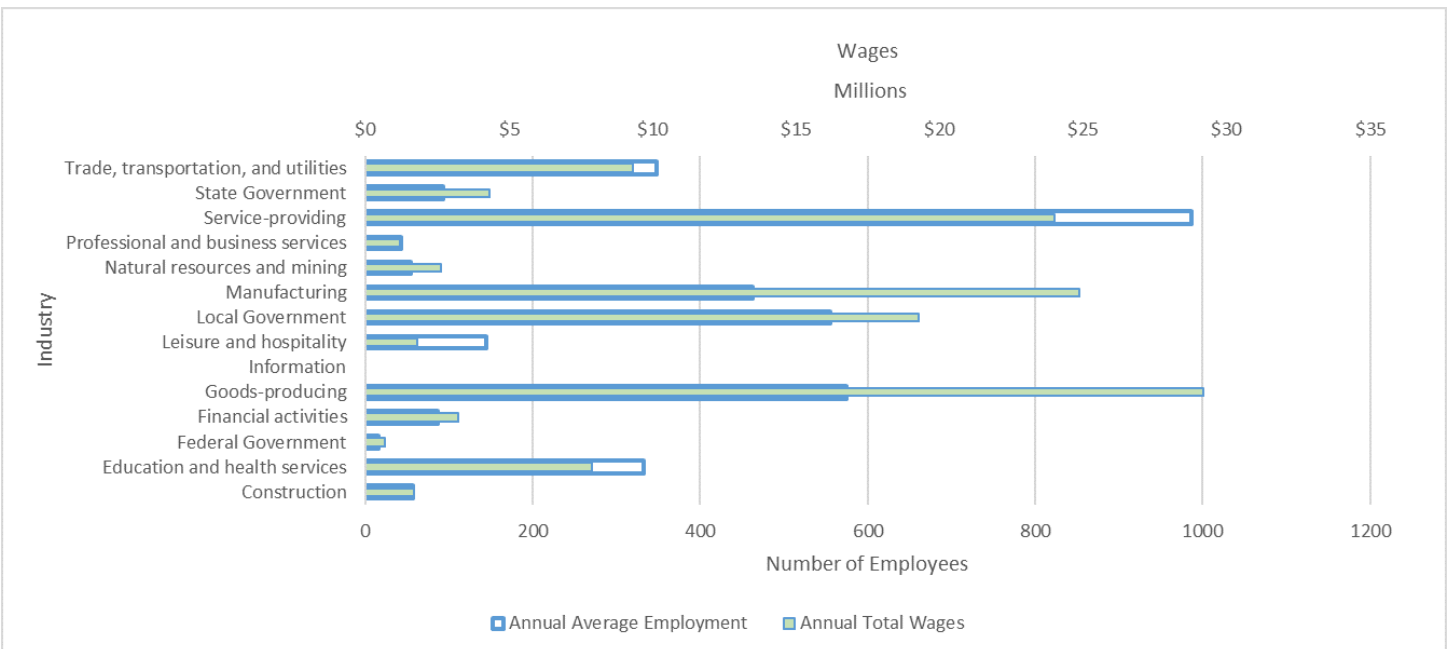
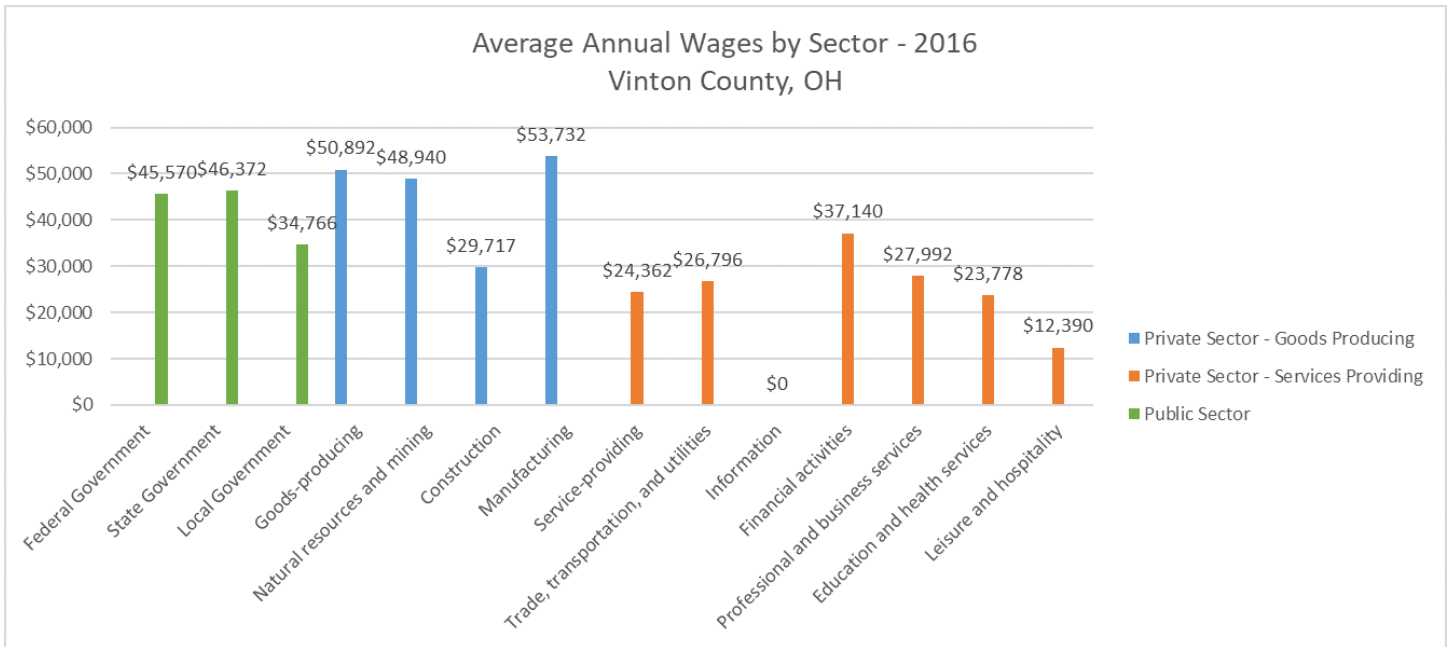


- Summer Feeding Program
- Back Pack Program
- Congregate Meals Services
- Food Pantry

Vinton County, OH

Charitable Assistance Agencies

Service Provider	Total in County	Monthly Points of Service
Food Pantries	2	1222
Congregate Meals Services	1	190
Back Pack Program	1	250
Summer Feeding Program	4	0



This document was produced using data from the SEO Foodlink Database in combination with data from other sources. The SEO Foodlink data pertains to the location and services of Emergency Food Providers and Retailers that accept SNAP and WIC in West Virginia and is available at

<http://foodlink.wvu.edu/>

In addition to our own data, we have brought together and analyzed information obtained from a variety of federal and state agencies as listed below.

US Bureau of Labor Statistics. *2016 Local Area Unemployment Statistics (LAUS)*. <http://www.bls.gov/lau/>

US Census Bureau.

- *2010 Decennial Census*. <http://www.census.gov/>
- *2016 Population Estimate Program*. <http://www.census.gov/popest/>
- *2016 Small Area Income and Population Estimates (SAIPE)*. <http://www.census.gov/did/www/saipe/>
- *2016 Census ACS 5-year Estimates*. <http://www.census.gov/programs-surveys/acs/>

US Department of Agriculture, Economic Research Service. 2010 and 2014 Food Access Data.

<http://www.ers.usda.gov/data-products/food-access-research-atlas/.aspx>

Ohio Department of Job and Family Services. Public Assistance Monthly Statistics (PAMS) Report.

<http://jfs.ohio.gov/pams/archive.stm>

Ohio Department of Education. Data for Free and Reduced Price Meal Eligibility.

<http://education.ohio.gov/Topics/Other-Resources/Food-and-Nutrition/Resources-and-Tools-for-Food-and-Nutrition/MR81-Data-for-Free-and-Reduced-Price-Meal-Eligibil>

Ohio Department of Health . WIC Data available via data request. <http://www.odh.ohio.gov/>