

## Demographic Summary

### Population

2016 Population	60,872
2016 Age Distributions:	
Median Age	41.9
Under 18	13,432
18-64	36,519
65 and over	10,921
2016 Median Household Income	\$44,256

### Employment

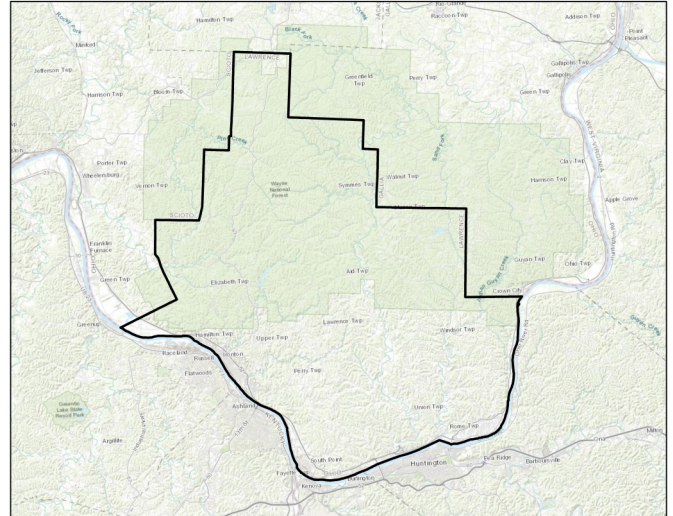
In Labor Force	26,571
Unemployment rate	7.6%

### Poverty

Poverty rate:	18.4%
Under 18	25.5%
Families	14.1%
Families with female head of house	41.1%

### Housing

Total Units	27,313
Percent Owner Occupied	73.6%
Percent of Owner Occ. with Mortgage	49.7%
Median Gross Rental Cost	\$664



**Lawrence County, OH**  
**SEO FOODLINK**  
 A PROJECT OF COMMUNITY FOOD INITIATIVES

## Resource Summary

### Food Assistance Programming

Total Agencies:	30
Food Pantries	1
Congregate Meals	0
Backpack Programs	0
Summer Feeding	11

### SNAP

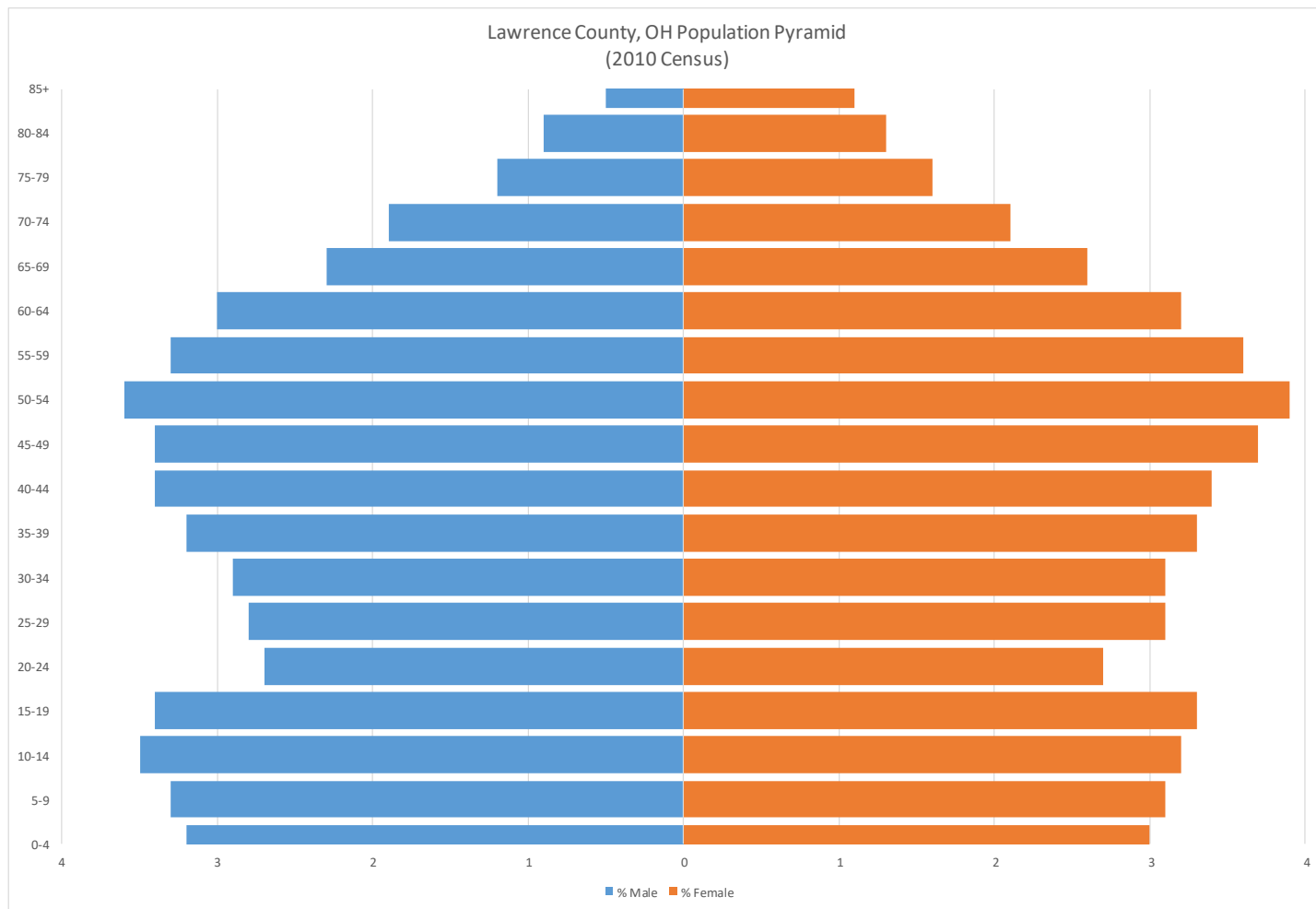
Monthly Enrollment Average	1,055
Monthly Disbursements (average)	\$1,467,595
SNAP Retailers	56
Participation rate	21%

### WIC

Monthly Caseload Average	1,431
WIC Retailers	14

### Free and Reduced School Meal Programs

Eligible Students:	1,781
Eligible Student Percentage	17%
Schools Participating in CEP	15

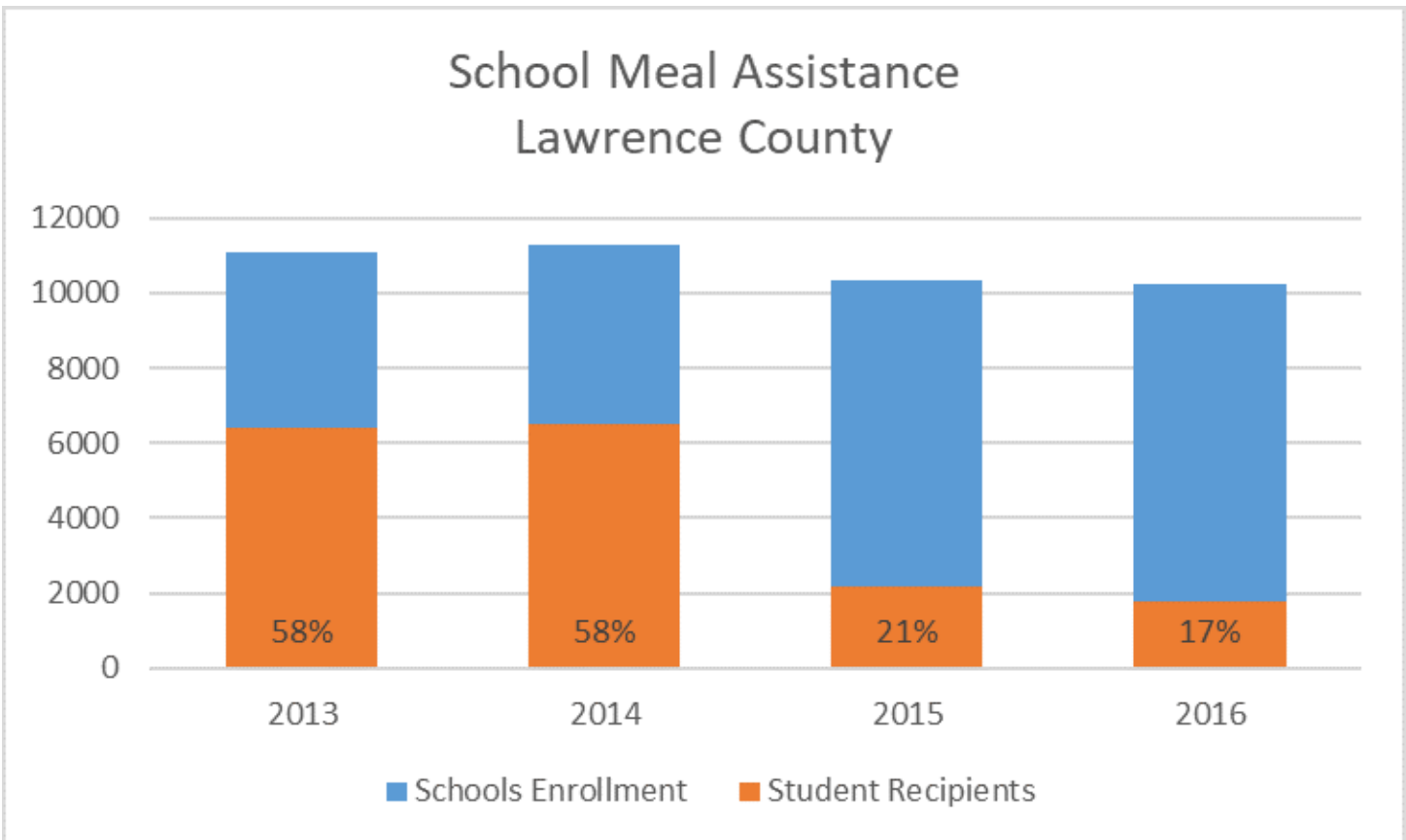


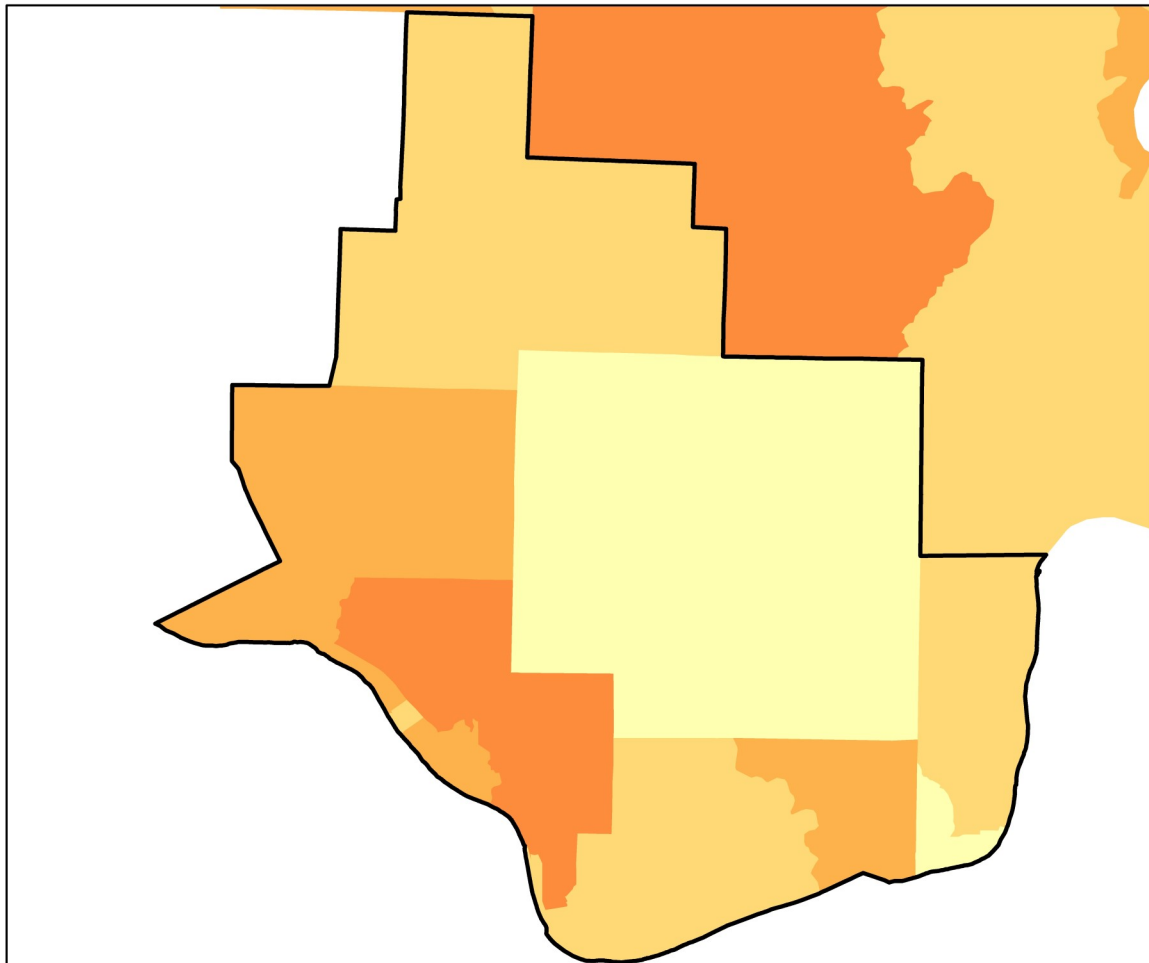
SNAP (2016)	Lawrence County 2016	SEO County Average	SEO County Rank
Cases Assisted	6,782	3,497	2nd
Individuals Enrolled	12,657	7,330	3rd
Children Enrolled	4,853	2,803	1st
Adults Enrolled	8,072	4,794	1st
Percent of Population Enrolled	21%	18%	3rd
Total Average Monthly Disbursed	\$1,467,595	\$1,075,871	2nd
Average Stamps Issued	\$116	\$116	5th

WIC (2016)	Lawrence County 2016	SEO County Average 2016	SEO County Rank
Average Monthly Cases*	1,431	816	1st
Caseload as a Percentage of Residents	2.4%	2.4%	3rd

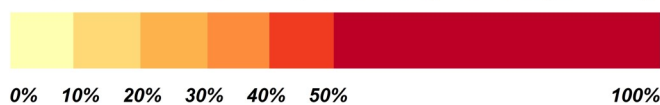
\*Not all cases are county residents

	Lawrence County 2016	SEO County Average 2016
Schools	24	14
Schools Participating in CEP	15	5
Percent of Schools Participating in CEP	63%	36%
Enrollment	10,257	5,724
Students Eligible for Meal Assistance	1,781	1,852
Percent Eligible for Assistance	17%	34%





Estimated Percent of Population Experiencing Poverty

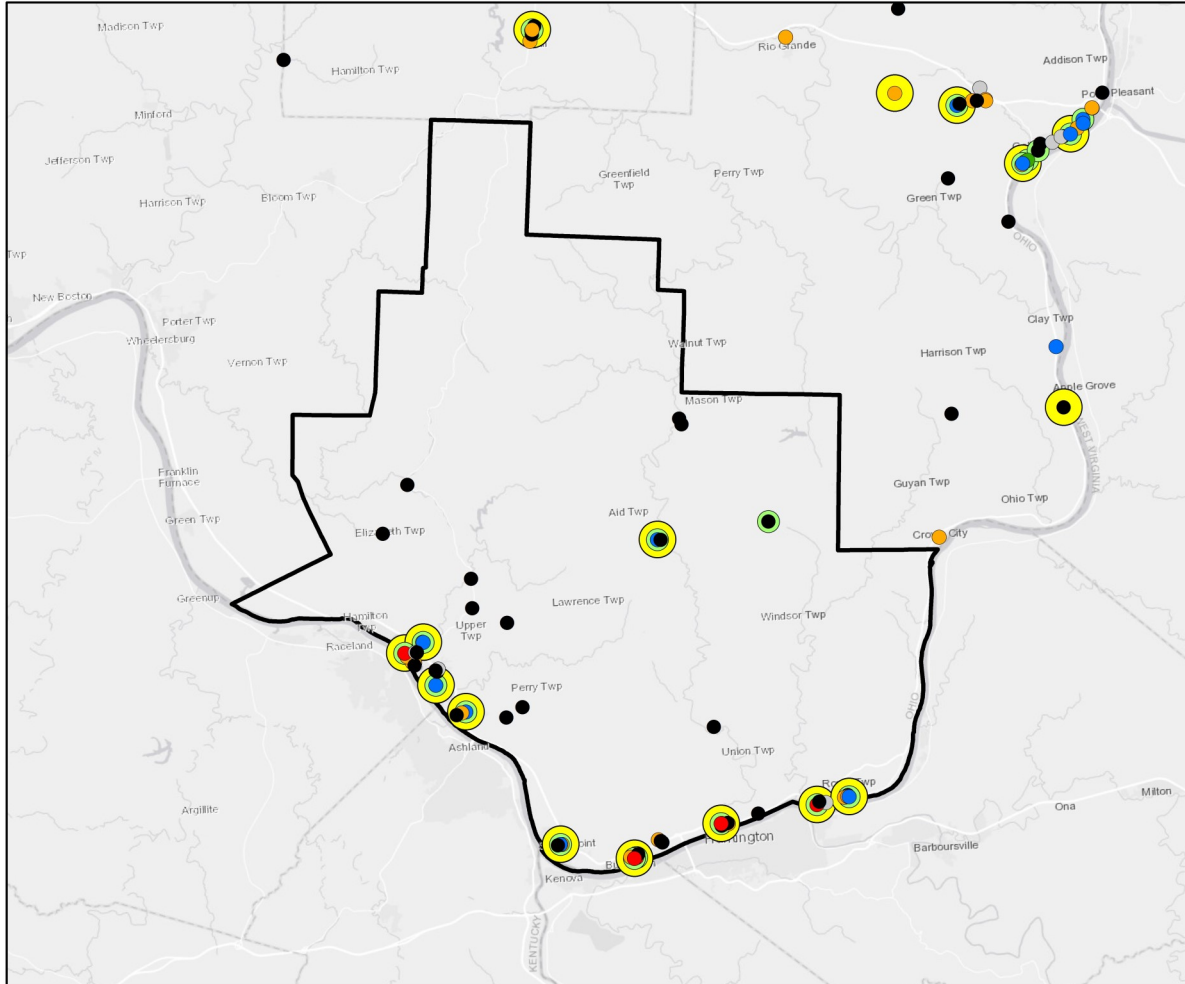


### Lawrence County, OH

SEO FOODLINK - 2018

2016 Census ACS Annual Estimate

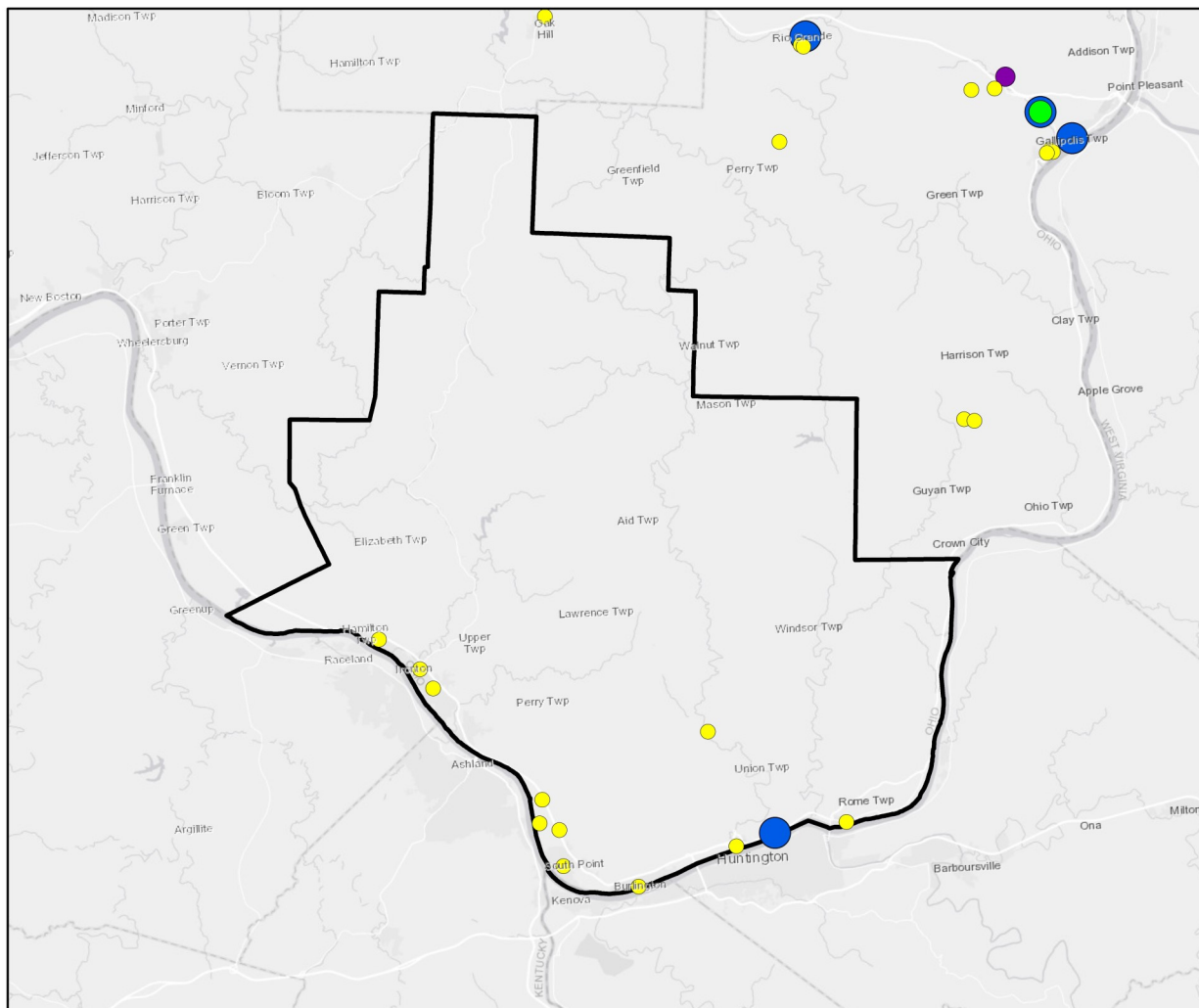
	Lawrence County	Ohio	United States
2016 Population Estimate	60,872	11,586,941	318,558,162
Percent in Poverty	18.4%	15.4%	15.1%
Unemployment Rate	7.6%	7.2%	7.4%
Median Household Income	\$44,256	\$50,674	\$55,322



- Big Box
- Grocery Store
- Small Box
- Convenience Store
- Specialty
- Farmer's Market
- Fresh Produce
- Accepts WIC

### Lawrence County, OH Retail Locations Accepting SNAP

Service Provider	Total in County	WIC	Fresh Produce
Big Box Retailers	5	4	5
Grocery Stores	6	6	6
Small Box Retailers	13	0	0
Convenience Store	26	0	1
Farmers Market	0	0	0
Specialty	3	0	0
<b>Total</b>	<b>53</b>	<b>10</b>	<b>12</b>

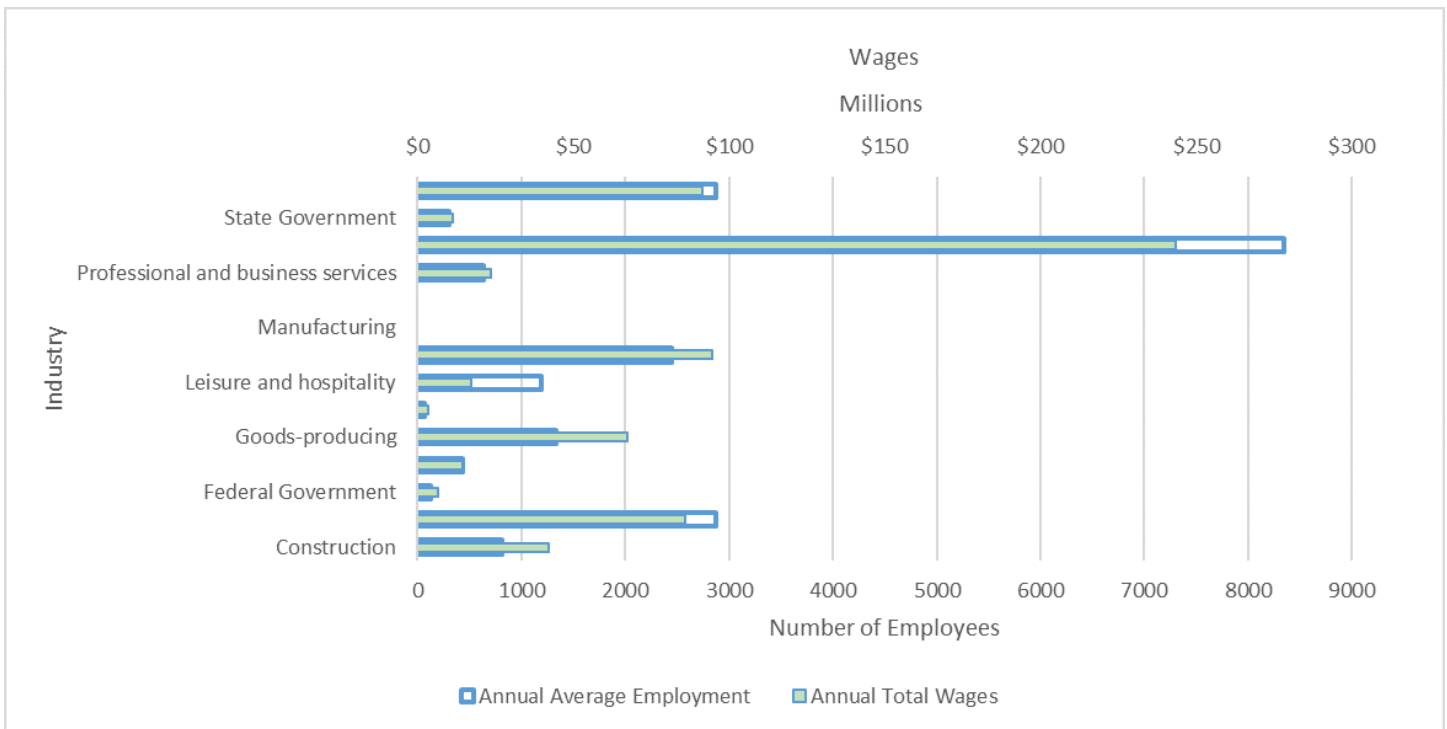
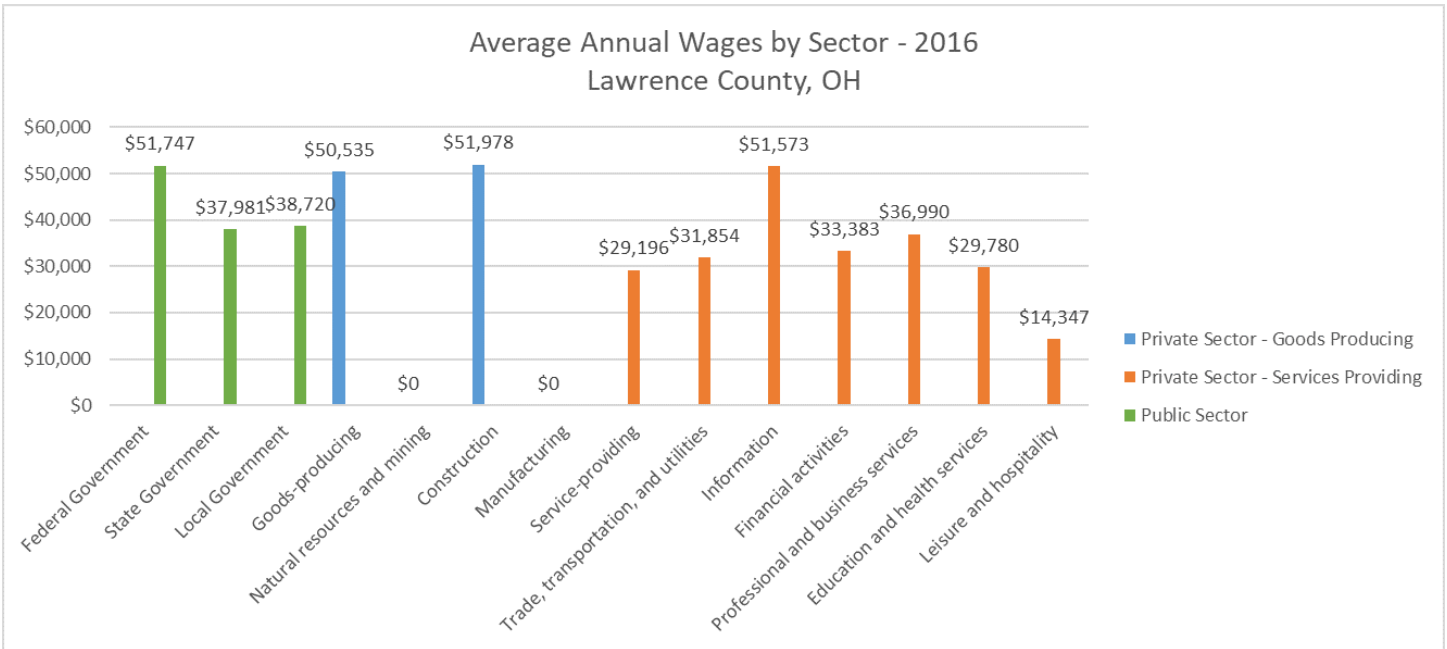


- Summer Feeding Program
- Back Pack Program
- Congregate Meals Services
- Food Pantry

### Lawrence County, OH

Charitable Assistance Agencies

Service Provider	Total in County	Monthly Points of Service
Food Pantries	1	900
Congregate Meals Services	0	0
Back Pack Program	0	0
Summer Feeding Program	11	0





This document was produced using data from the SEO Foodlink Database in combination with data from other sources. The SEO Foodlink data pertains to the location and services of Emergency Food Providers and Retailers that accept SNAP and WIC in West Virginia and is available at

<http://foodlink.wvu.edu/>

In addition to our own data, we have brought together and analyzed information obtained from a variety of federal and state agencies as listed below.

US Bureau of Labor Statistics. *2016 Local Area Unemployment Statistics (LAUS)*. <http://www.bls.gov/lau/>

US Census Bureau.

- *2010 Decennial Census*. <http://www.census.gov/>
- *2016 Population Estimate Program*. <http://www.census.gov/popest/>
- *2016 Small Area Income and Population Estimates (SAIPE)*. <http://www.census.gov/did/www/saipe/>
- *2016 Census ACS 5-year Estimates*. <http://www.census.gov/programs-surveys/acs/>

US Department of Agriculture, Economic Research Service. 2010 and 2014 Food Access Data.

<http://www.ers.usda.gov/data-products/food-access-research-atlas/.aspx>

Ohio Department of Job and Family Services. Public Assistance Monthly Statistics (PAMS) Report.

<http://jfs.ohio.gov/pams/archive.stm>

Ohio Department of Education. Data for Free and Reduced Price Meal Eligibility.

<http://education.ohio.gov/Topics/Other-Resources/Food-and-Nutrition/Resources-and-Tools-for-Food-and-Nutrition/MR81-Data-for-Free-and-Reduced-Price-Meal-Eligibil>

Ohio Department of Health . WIC Data available via data request. <http://www.odh.ohio.gov/>