

## Demographic Summary

### Population

2016 Population	32,717
2016 Age Distributions:	
Median Age	40.1
Under 18	7,712
18-64	19,368
65 and over	5,425
2016 Median Household Income	\$40,330

### Employment

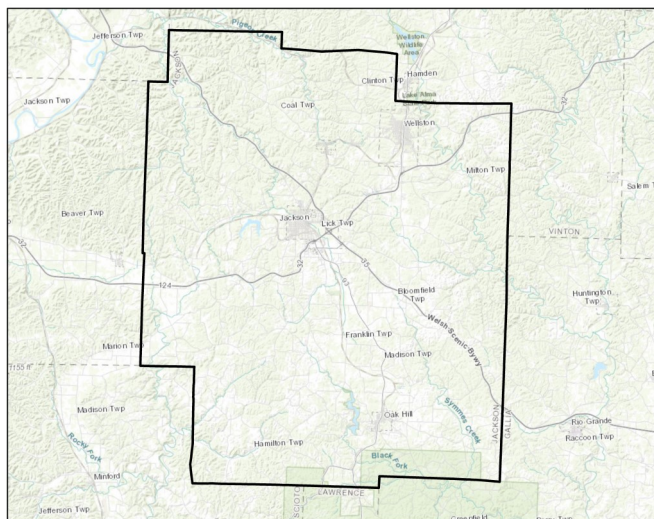
In Labor Force	14,932
Unemployment rate	11.2%

### Poverty

Poverty rate:	23.0%
Under 18	34.6%
Families	16.4%
Families with female head of house	40.6%

### Housing

Total Units	14,565
Percent Owner Occupied	66.5%
Percent of Owner Occ. with Mortgage	55.5%
Median Gross Rental Cost	\$675



**Jackson County, OH**  
**SEO FOODLINK**  
 A PROJECT OF COMMUNITY FOOD INITIATIVES

## Resource Summary

### Food Assistance Programming

Total Agencies:	30
Food Pantries	4
Congregate Meals	3
Backpack Programs	1
Summer Feeding	22

### SNAP

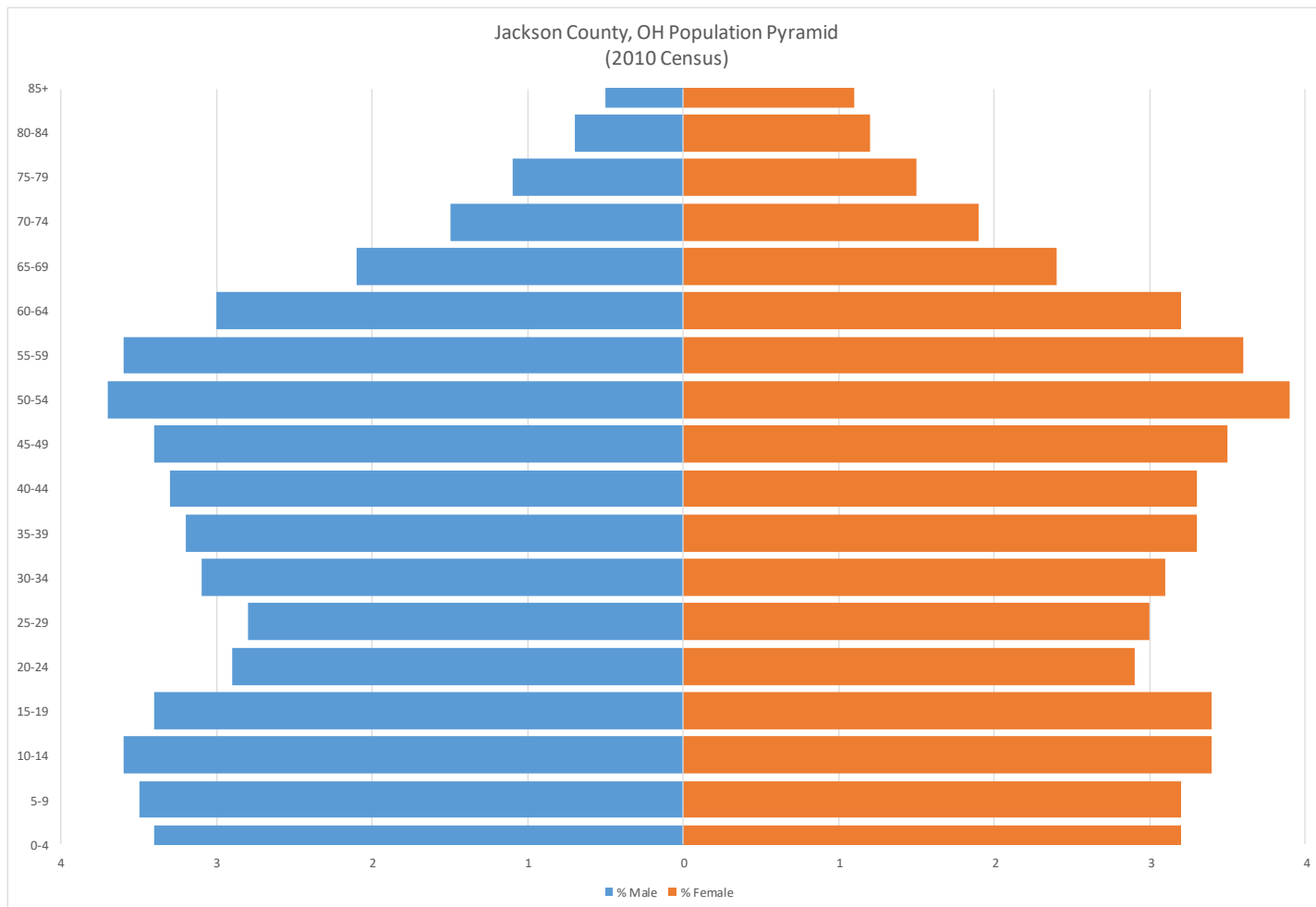
Monthly Enrollment Average	530
Monthly Disbursements (average)	\$745,716
SNAP Retailers	45
Participation rate	19%

### WIC

Monthly Caseload Average	783
WIC Retailers	2

### Free and Reduced School Meal Programs

Eligible Students:	2,527
Eligible Student Percentage	40%
Schools Participating in CEP	3

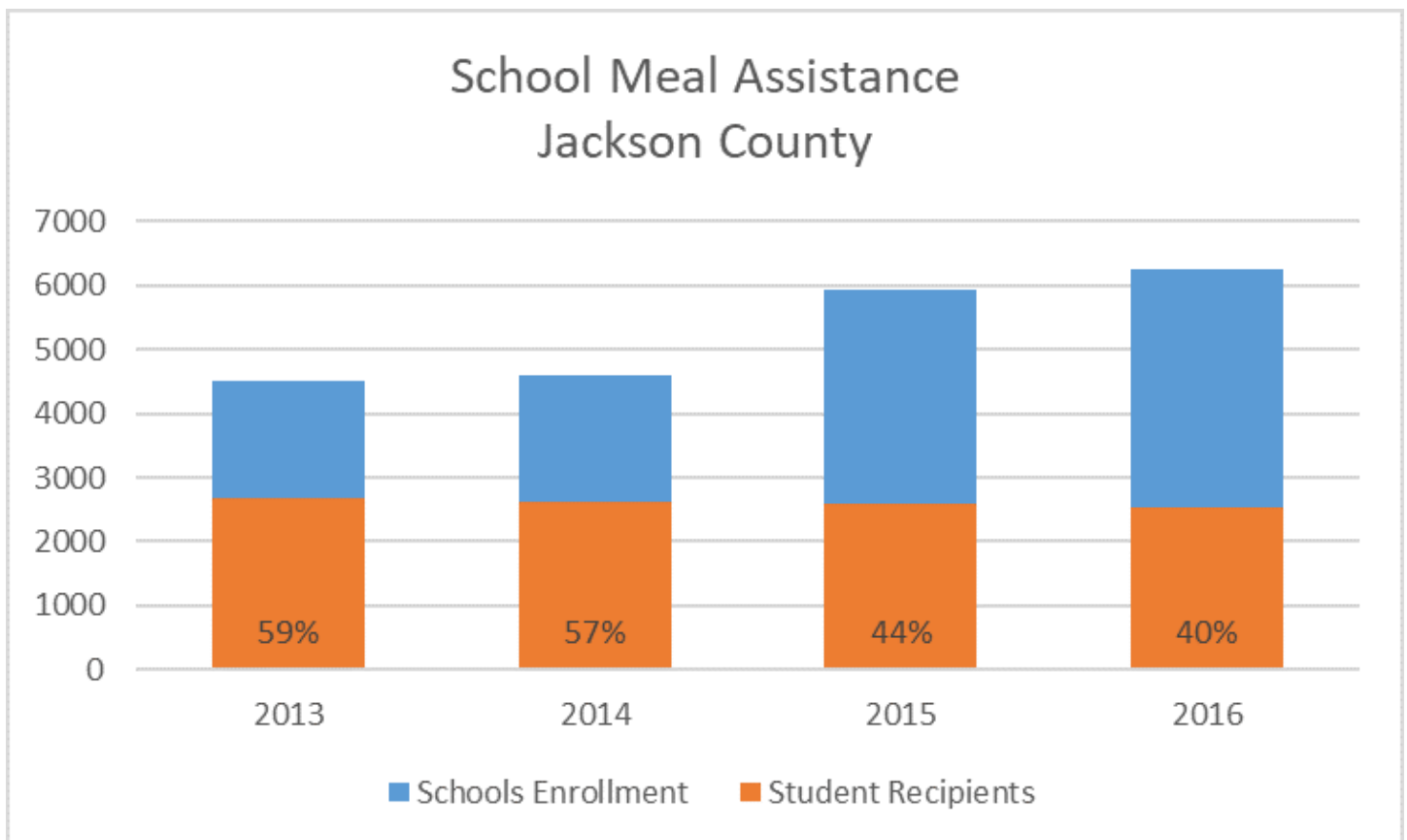


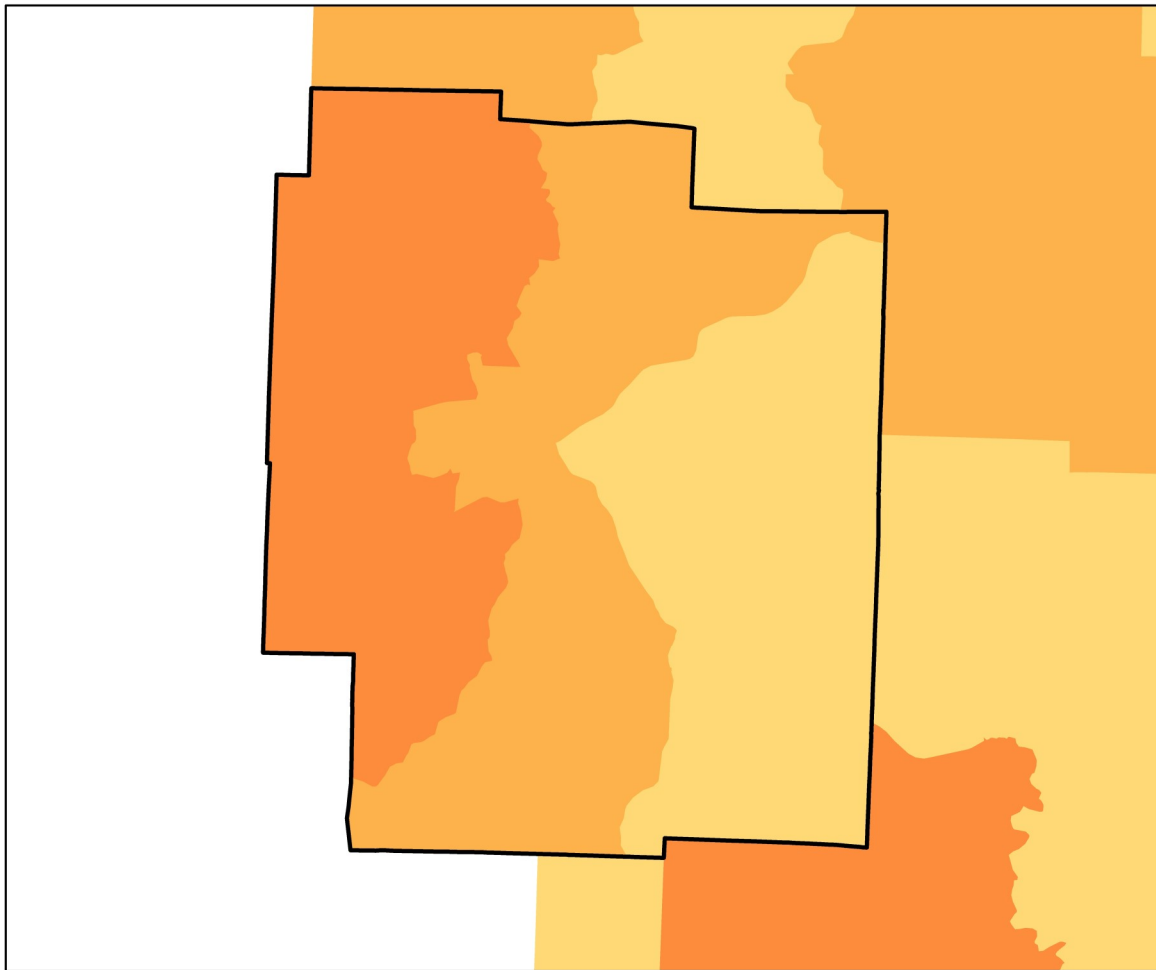
SNAP (2016)	Jackson County 2016	SEO County Average	SEO County Rank
Cases Assisted	1,017	3,497	9th
Individuals Enrolled	6,364	7,330	8th
Children Enrolled	2,566	2,803	6th
Adults Enrolled	4,125	4,794	6th
Percent of Population Enrolled	19%	18%	6th
Total Average Monthly Disbursed	\$745,716	\$1,075,871	7th
Average Stamps Issued	\$117	\$116	4th

WIC (2016)	Jackson County 2016	SEO County Average 2016	SEO County Rank
Average Monthly Cases*	783	816	6th
Caseload as a Percentage of Residents	2.4%	2.4%	3rd

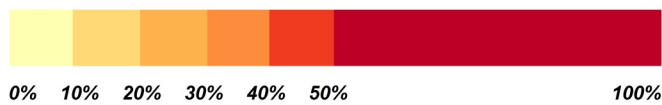
\*Not all cases are county residents

	Jackson County 2016	SEO County Average 2016
Schools	12	14
Schools Participating in CEP	3	5
Percent of Schools Participating in CEP	25%	36%
Enrollment	6,245	5,724
Students Eligible for Meal Assistance	2,527	1,852
Percent Eligible for Assistance	40%	34%





Estimated Percent of Population Experiencing Poverty

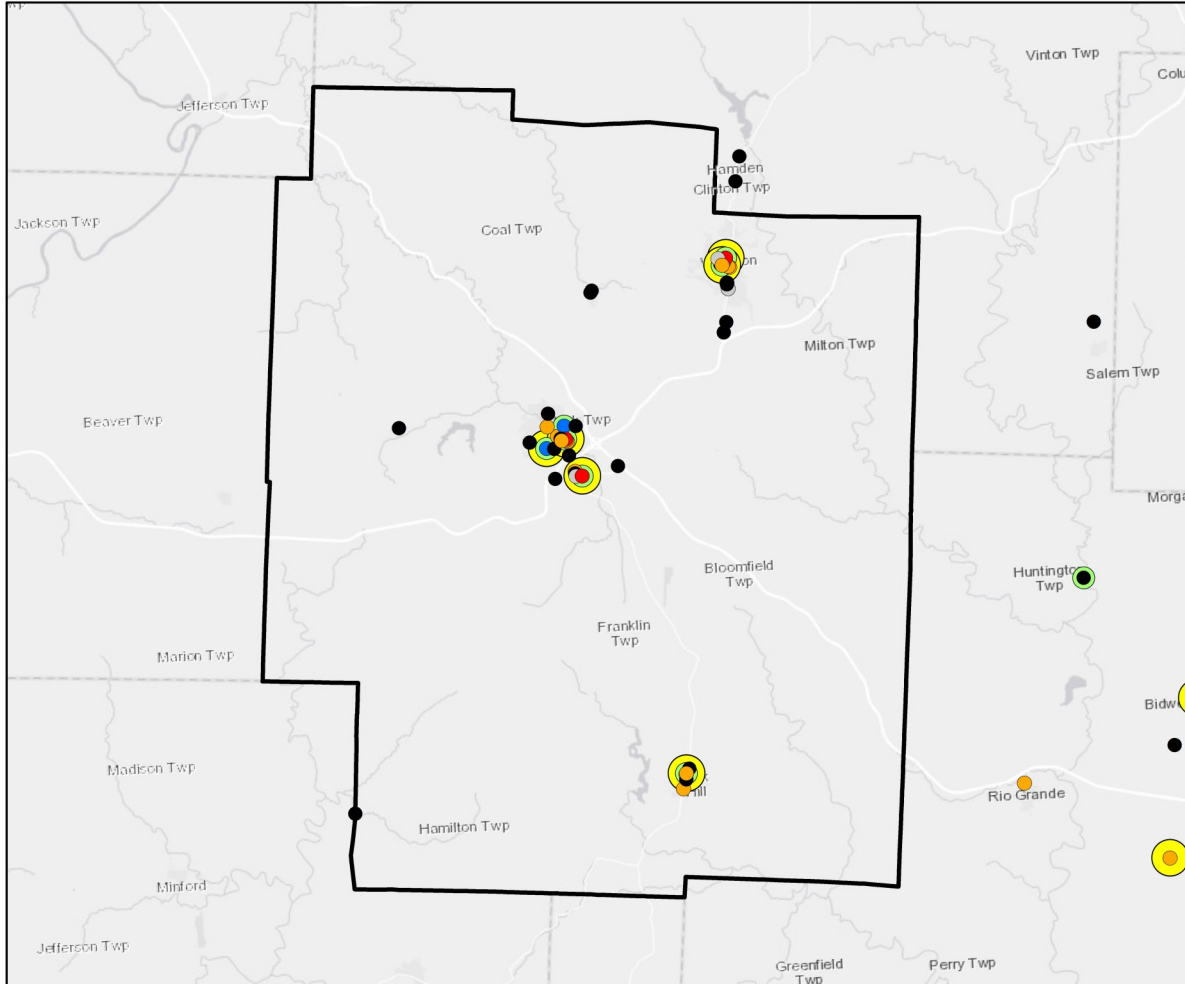


### Jackson County, OH

SEO FOODLINK - 2018

2016 Census ACS Annual Estimate

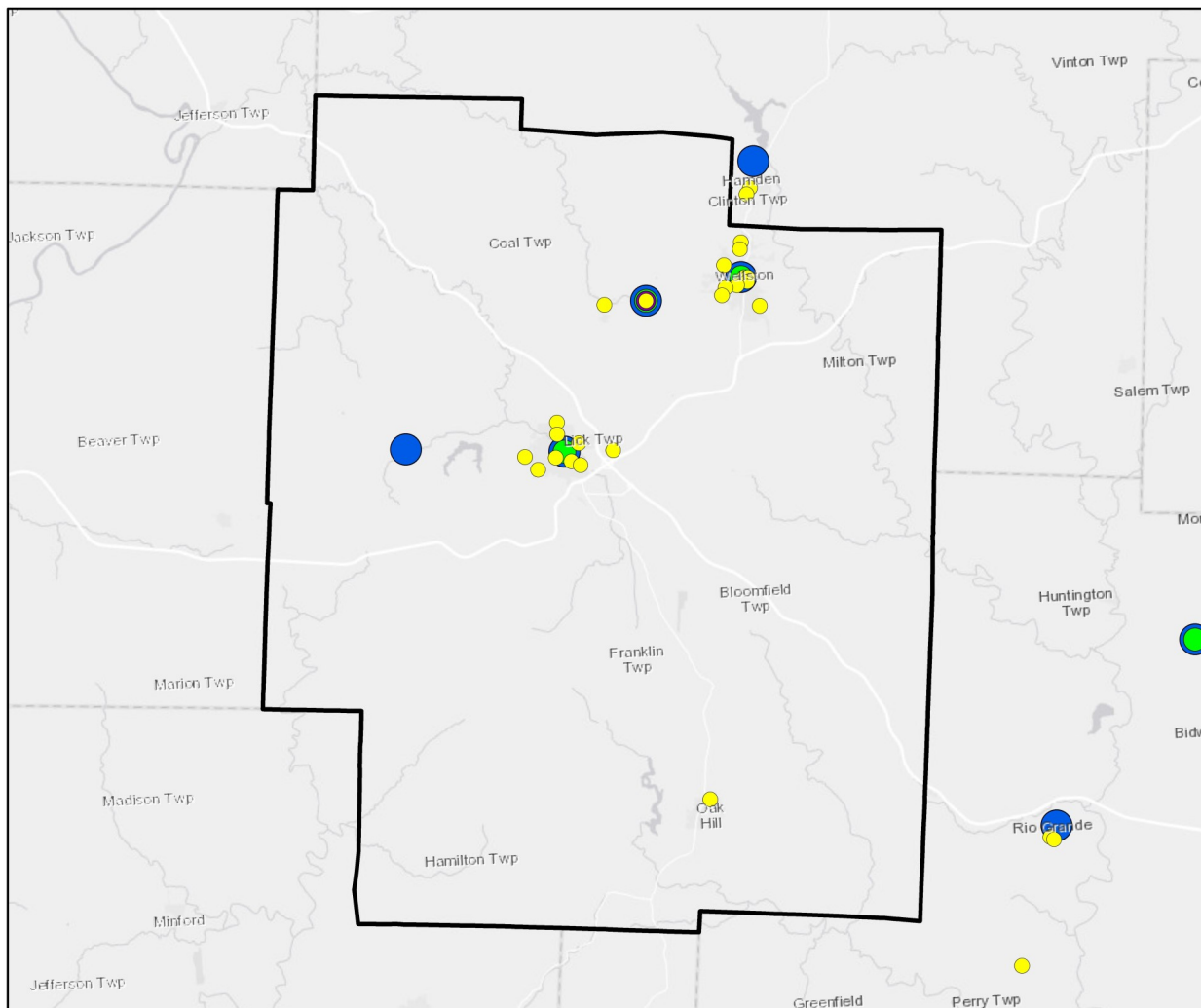
	Jackson County	Ohio	United States
2016 Population Estimate	32,717	11,586,941	318,558,162
Percent in Poverty	23.0%	15.4%	15.1%
Unemployment Rate	11.2%	7.2%	7.4%
Median Household Income	\$40,330	\$50,674	\$55,322



- Big Box
- Grocery Store
- Small Box
- Convenience Store
- Specialty
- Farmer's Market
- Fresh Produce
- Accepts WIC

### Jackson County, OH Retail Locations Accepting SNAP

Service Provider	Total in County	WIC	Fresh Produce
Big Box Retailers	3	3	3
Grocery Stores	2	1	2
Small Box Retailers	14	0	2
Convenience Store	20	0	0
Farmers Market	0	0	0
Specialty	4	0	0
<b>Total</b>	<b>43</b>	<b>4</b>	<b>7</b>



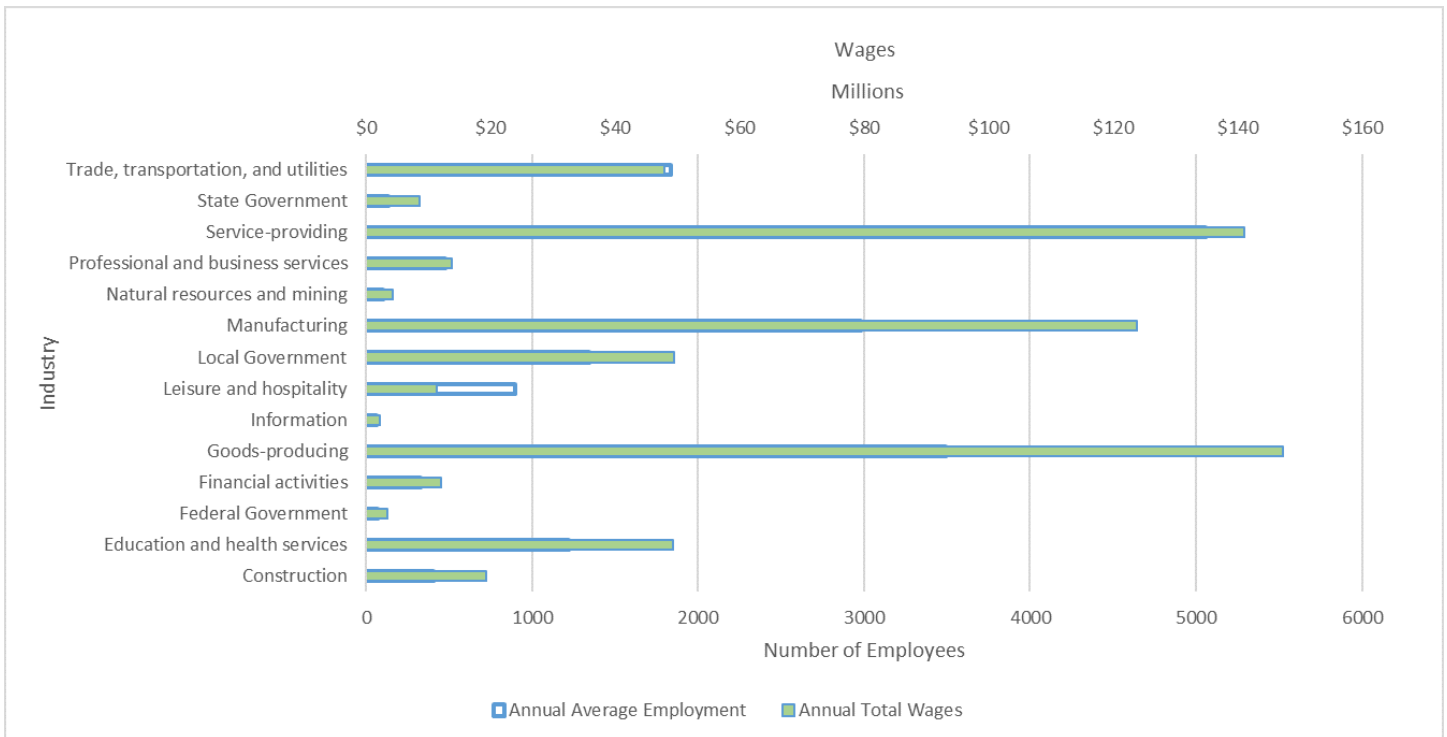
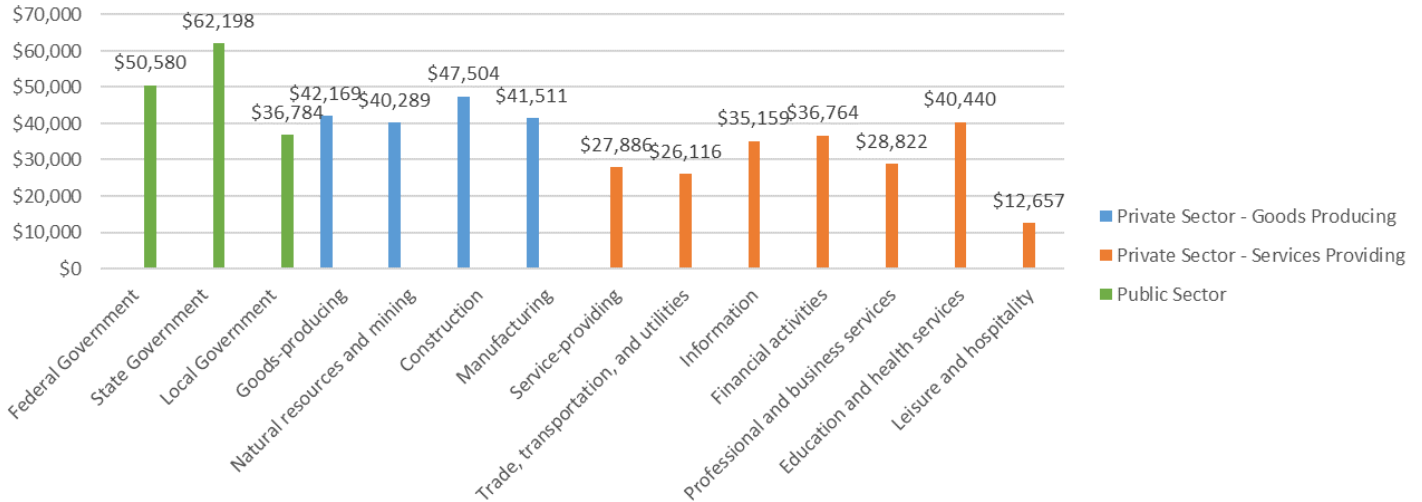
- Summer Feeding Program
- Back Pack Program
- Congregate Meals Services
- Food Pantry

### Jackson County, OH

Charitable Assistance Agencies

Service Provider	Total in County	Monthly Points of Service
Food Pantries	4	651
Congregate Meals Services	3	400
Back Pack Program	1	260
Summer Feeding Program	22	900

Average Annual Wages by Sector - 2016  
Jackson County, OH





This document was produced using data from the SEO Foodlink Database in combination with data from other sources. The SEO Foodlink data pertains to the location and services of Emergency Food Providers and Retailers that accept SNAP and WIC in West Virginia and is available at

<http://foodlink.wvu.edu/>

In addition to our own data, we have brought together and analyzed information obtained from a variety of federal and state agencies as listed below.

US Bureau of Labor Statistics. *2016 Local Area Unemployment Statistics (LAUS)*. <http://www.bls.gov/lau/>

US Census Bureau.

- *2010 Decennial Census*. <http://www.census.gov/>
- *2016 Population Estimate Program*. <http://www.census.gov/popest/>
- *2016 Small Area Income and Population Estimates (SAIPE)*. <http://www.census.gov/did/www/saipe/>
- *2016 Census ACS 5-year Estimates*. <http://www.census.gov/programs-surveys/acs/>

US Department of Agriculture, Economic Research Service. 2010 and 2014 Food Access Data.

<http://www.ers.usda.gov/data-products/food-access-research-atlas/.aspx>

Ohio Department of Job and Family Services. Public Assistance Monthly Statistics (PAMS) Report.

<http://jfs.ohio.gov/pams/archive.stm>

Ohio Department of Education. Data for Free and Reduced Price Meal Eligibility.

<http://education.ohio.gov/Topics/Other-Resources/Food-and-Nutrition/Resources-and-Tools-for-Food-and-Nutrition/MR81-Data-for-Free-and-Reduced-Price-Meal-Eligibil>

Ohio Department of Health . WIC Data available via data request. <http://www.odh.ohio.gov/>