

Demographic Summary

Population

2016 Population	66,186
2016 Age Distributions:	
Median Age	28.8
Under 18	9,829
18-64	48,548
65 and over	7,809
2016 Median Household Income	\$34,221

Employment

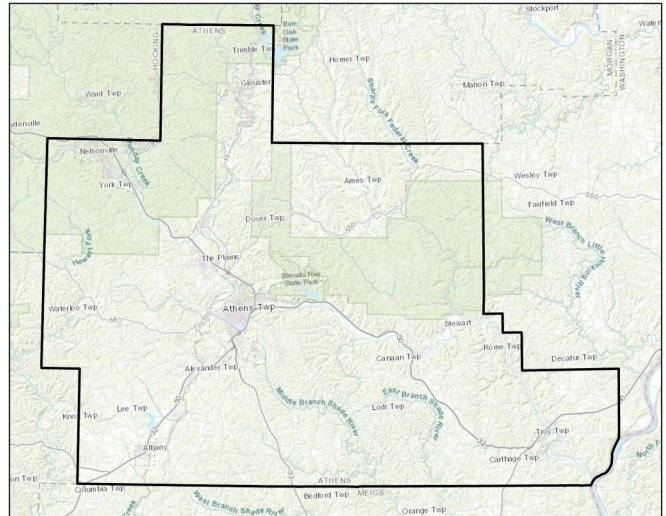
In Labor Force	30,004
Unemployment rate	9.4%

Poverty

Poverty rate:	31.2%
Under 18	23.8%
Families	30.0%
Families with female head of house	46.1%

Housing

Total Units	26,370
Percent Owner Occupied	56.1%
Percent of Owner Occ. with Mortgage	53.0%
Median Gross Rental Cost	\$726



Athens County, OH
SEO FOODLINK
 A PROJECT OF COMMUNITY FOOD INITIATIVES

Resource Summary

Food Assistance Programming

Total Agencies:	46
Food Pantries	17
Congregate Meals	9
Backpack Programs	2
Summer Feeding	18

SNAP

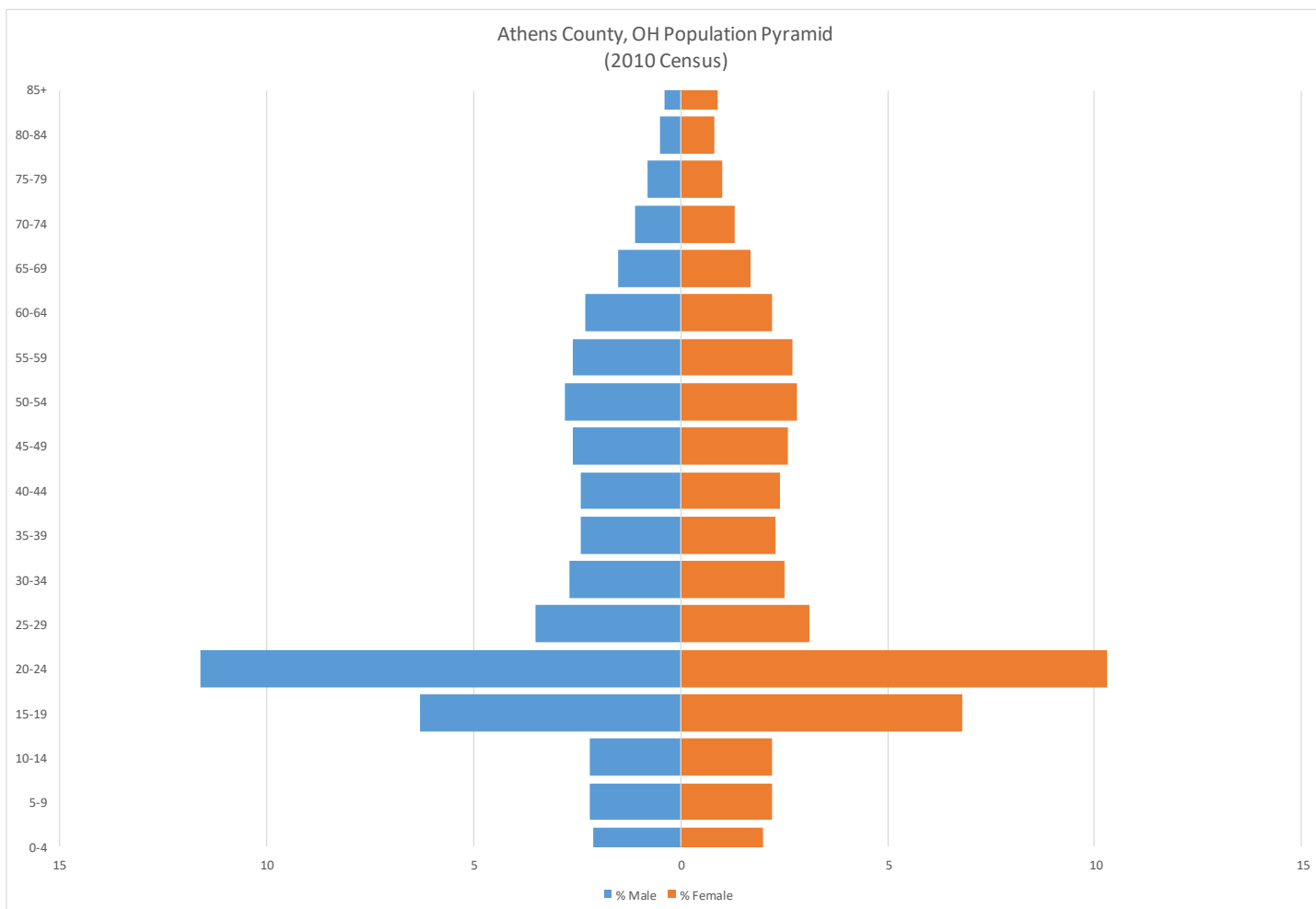
Monthly Enrollment Average	835
Monthly Disbursements (average)	\$1,177,610
SNAP Retailers	56
Participation rate	15%

WIC

Monthly Caseload Average	1,151
WIC Retailers	12

Free and Reduced School Meal Programs

Eligible Students:	3,030
Eligible Student Percentage	36%
Schools Participating in CEP	6

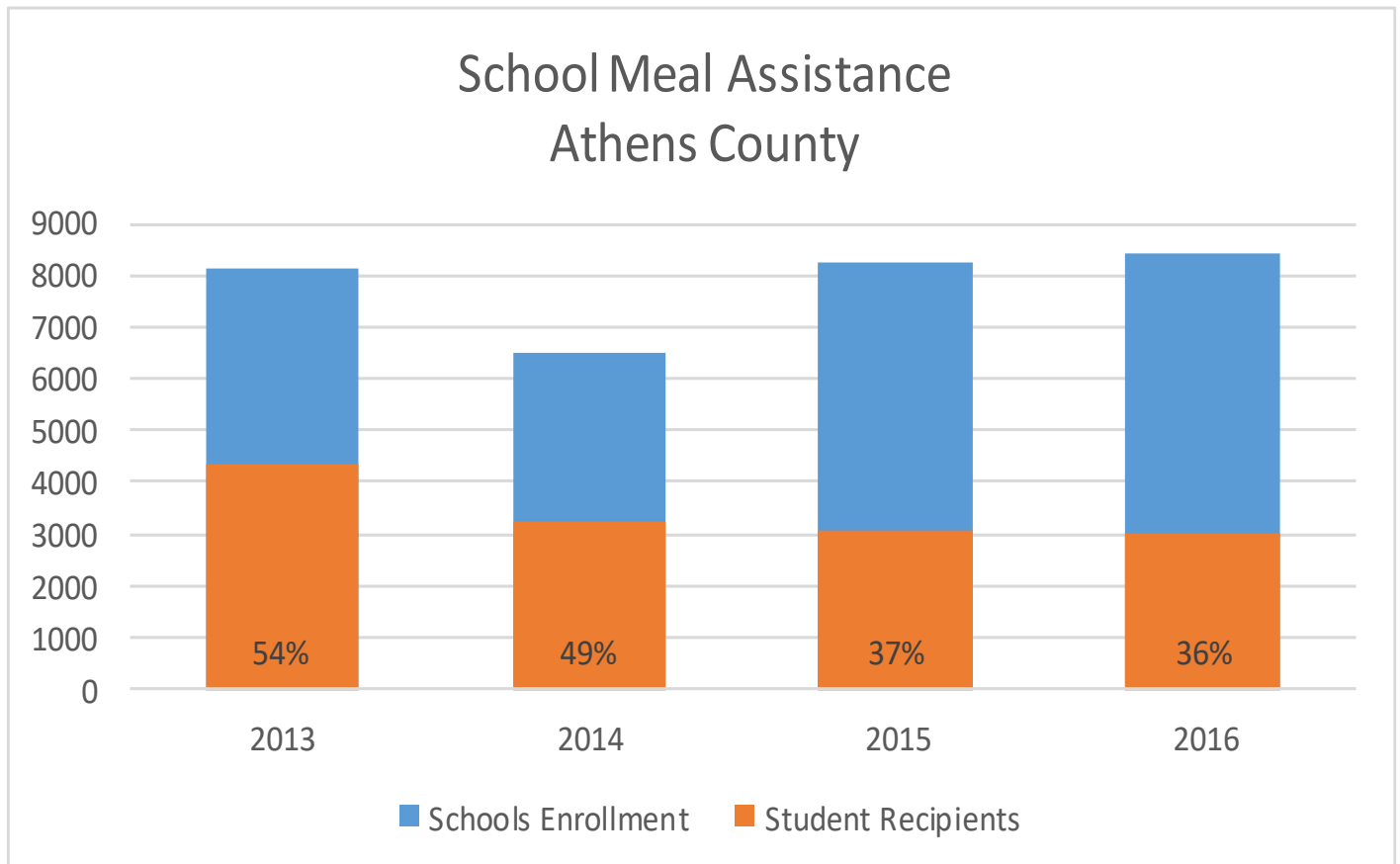


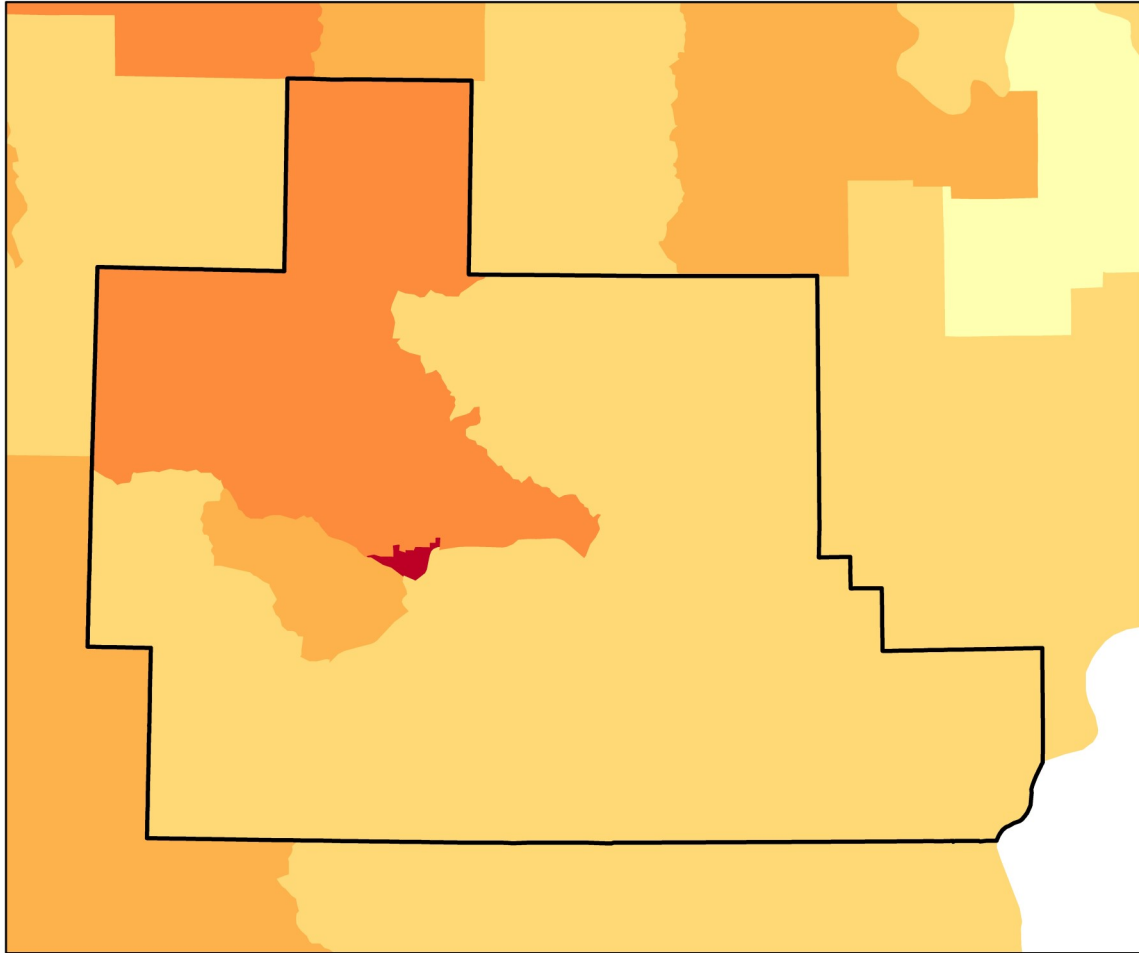
SNAP (2016)	Athens County 2016	SEO County Average	SEO County Rank
Cases Assisted	5,364	4,005	3rd
Individuals Enrolled	10,018	7,330	4th
Children Enrolled	3,482	2,803	2nd
Adults Enrolled	6,841	4,794	2nd
Percent of Population Enrolled	15%	18%	9th
Total Average Monthly Disbursed	\$1,177,610	\$1,075,871	3rd
Average Stamps Issued	\$118	\$116	2nd

WIC (2016)	Athens County 2016	SEO County Average 2016	SEO County Rank
Average Monthly Cases*	1,151	816	2nd
Caseload as a Percentage of Residents	1.7%	2.4%	10th

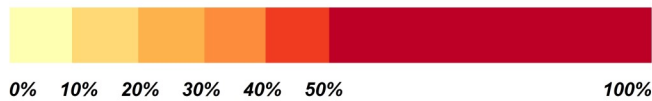
*Not all cases are county residents

	Athens County 2016	SEO County Average 2016
Schools	19	14
Schools Participating in CEP	6	5
Percent of Schools Participating in CEP	32%	36%
Enrollment	8,452	5,724
Students Eligible for Meal Assistance	3,030	1,852
Percent Eligible for Assistance	36%	34%





Estimated Percent of Population Experiencing Poverty

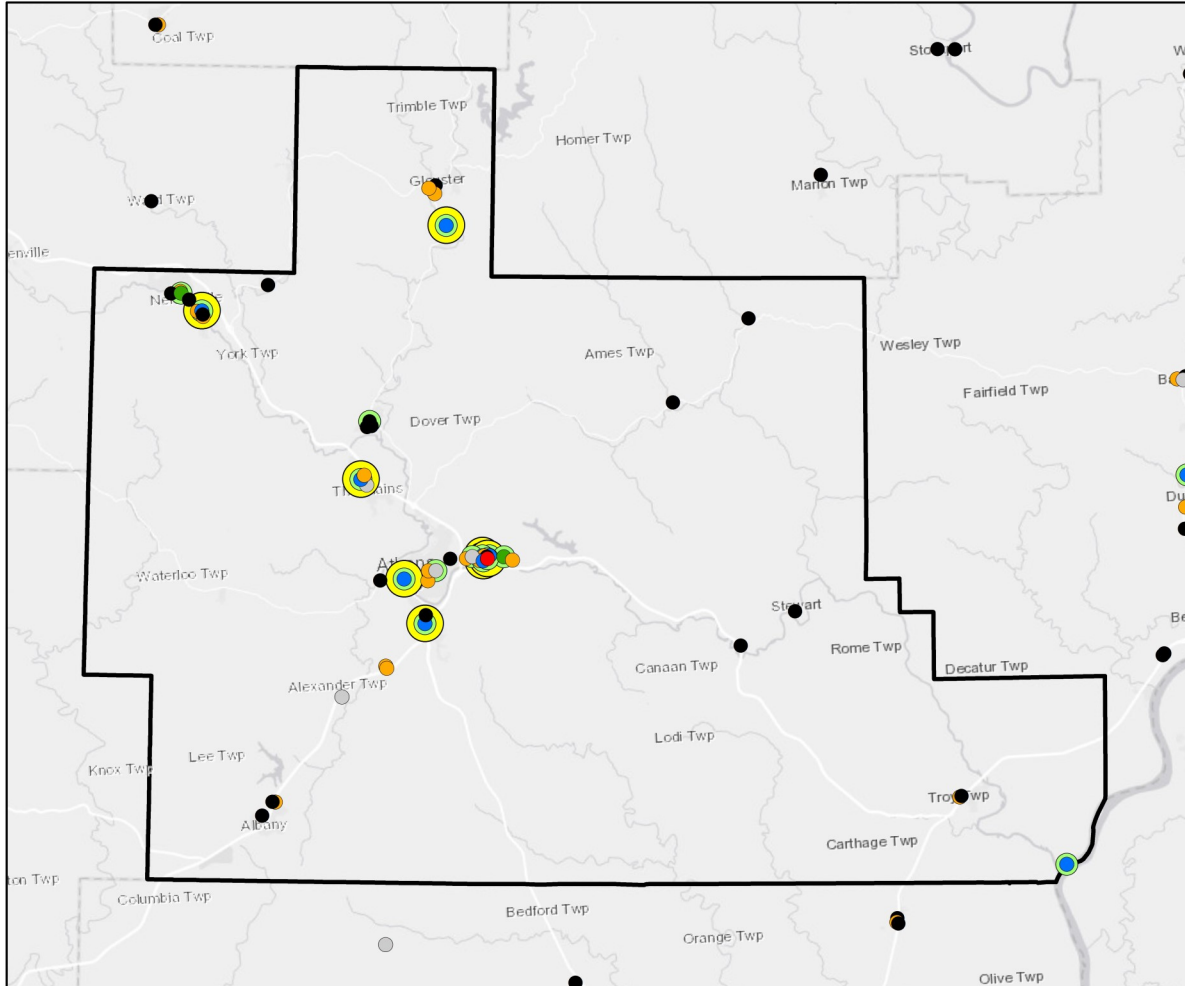


Athens County, OH

SEO FOODLINK - 2018

2016 Census ACS Annual Estimate

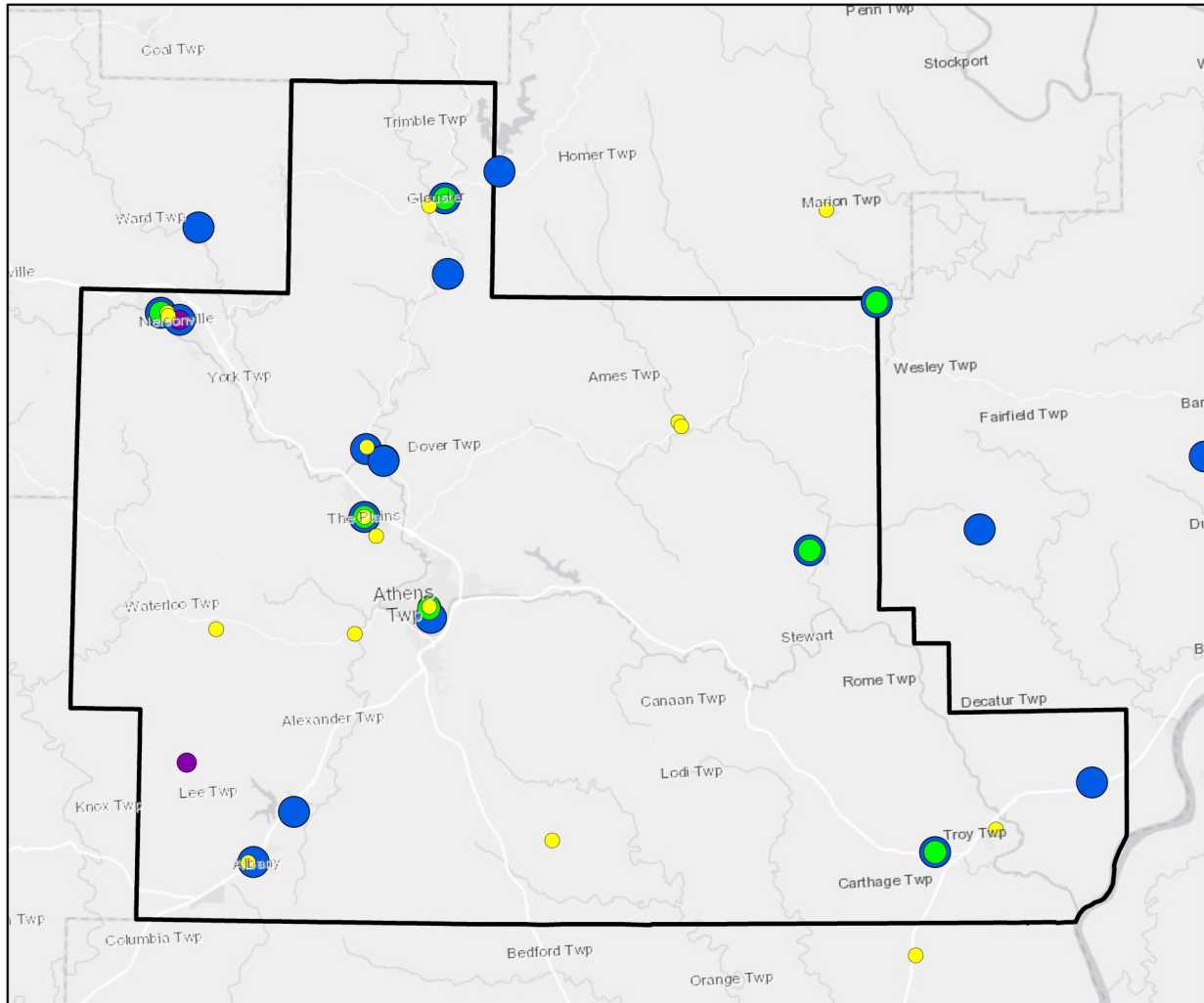
	Athens County	Ohio	United States
2016 Population Estimate	66,186	11,586,941	318,558,162
Percent in Poverty	31.2%	15.4%	15.1%
Unemployment Rate	9.4%	7.2%	7.4%
Median Household Income	\$34,221	\$50,674	\$55,322



- Big Box
- Grocery Store
- Small Box
- Convenience Store
- Specialty
- Farmer's Market
- Fresh Produce
- Accepts WIC

Athens County, OH Retail Locations Accepting SNAP

Service Provider	Total in County	WIC	Fresh Produce
Big Box Retailers	1	1	1
Grocery Stores	9	7	9
Small Box Retailers	17	0	0
Convenience Store	20	0	0
Farmers Market	2	0	2
Specialty	4	0	2
Total	53	8	14

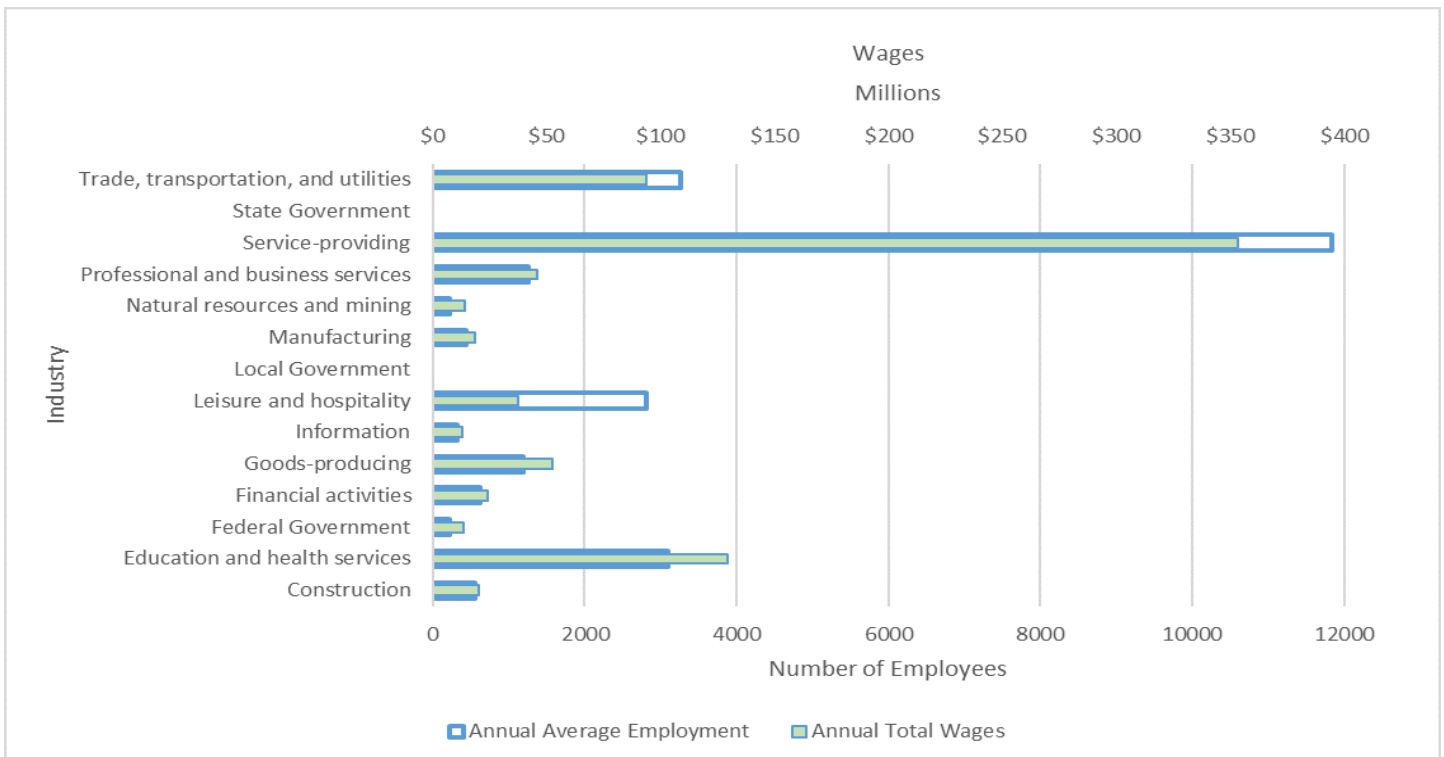
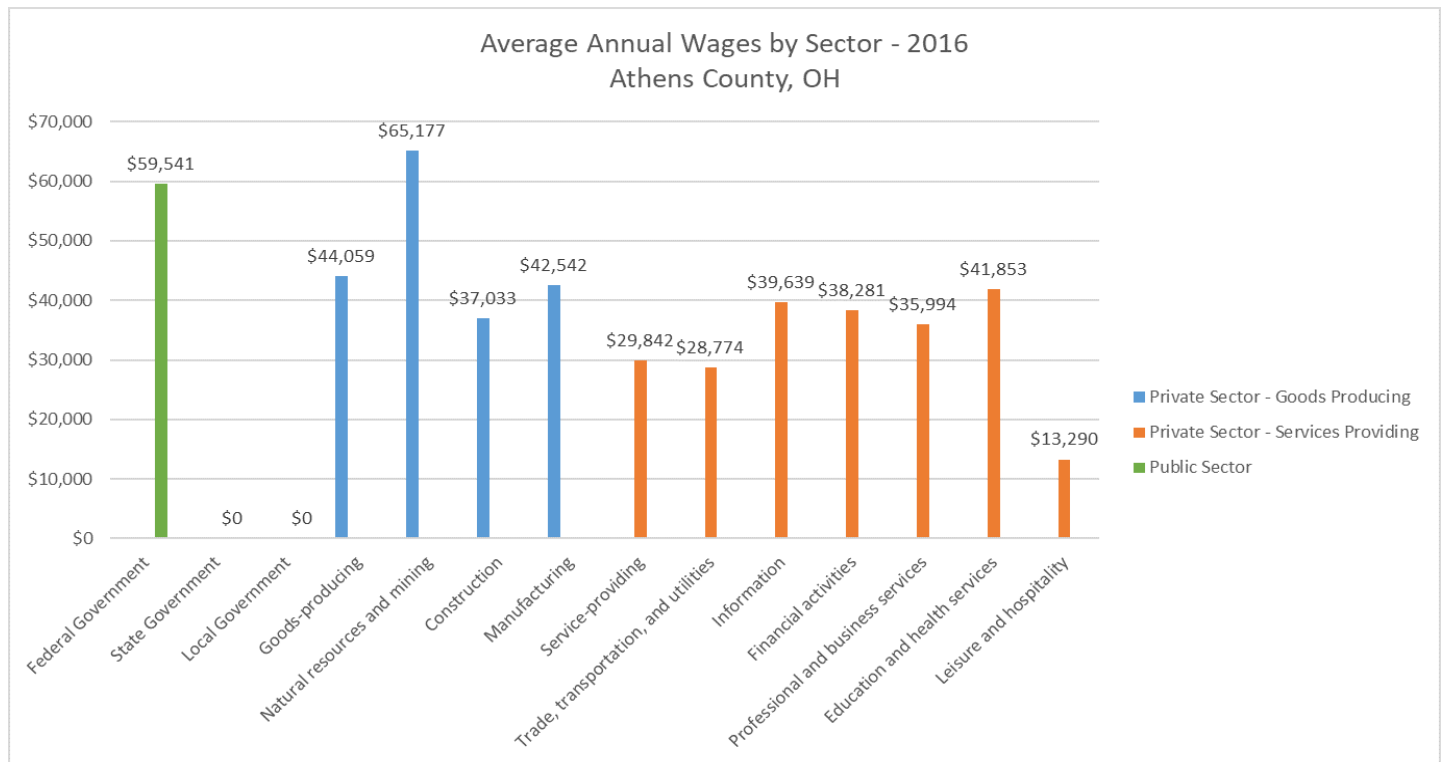


- Summer Feeding Program
- Back Pack Program
- Congregate Meals Services
- Food Pantry

Athens County, OH

Charitable Assistance Agencies

Service Provider	Total in County	Monthly Points of Service
Food Pantries	17	785
Congregate Meals Services	9	1,200
Back Pack Program	2	1,612
Summer Feeding Program	18	609



This document was produced using data from the SEO Foodlink Database in combination with data from other sources. The SEO Foodlink data pertains to the location and services of Emergency Food Providers and Retailers that accept SNAP and WIC in West Virginia and is available at

<http://foodlink.wvu.edu/>

In addition to our own data, we have brought together and analyzed information obtained from a variety of federal and state agencies as listed below.

US Bureau of Labor Statistics. *2016 Local Area Unemployment Statistics (LAUS)*. <http://www.bls.gov/lau/>

US Census Bureau.

- *2010 Decennial Census*. <http://www.census.gov/>
- *2016 Population Estimate Program*. <http://www.census.gov/popest/>
- *2016 Small Area Income and Population Estimates (SAIPE)*. <http://www.census.gov/did/www/saipe/>
- *2016 Census ACS 5-year Estimates*. <http://www.census.gov/programs-surveys/acs/>

US Department of Agriculture, Economic Research Service. 2010 and 2014 Food Access Data.

<http://www.ers.usda.gov/data-products/food-access-research-atlas/.aspx>

Ohio Department of Job and Family Services. Public Assistance Monthly Statistics (PAMS) Report.

<http://jfs.ohio.gov/pams/archive.stm>

Ohio Department of Education. Data for Free and Reduced Price Meal Eligibility.

<http://education.ohio.gov/Topics/Other-Resources/Food-and-Nutrition/Resources-and-Tools-for-Food-and-Nutrition/MR81-Data-for-Free-and-Reduced-Price-Meal-Eligibil>

Ohio Department of Health . WIC Data available via data request. <http://www.odh.ohio.gov/>