

Demographic Summary

Population

2016 Population	28,690
2016 Age Distributions:	
Median Age	42.8
Under 18	6,320
18-64	16,871
65 and over	5,149
2016 Median Household Income	\$43,382

Employment

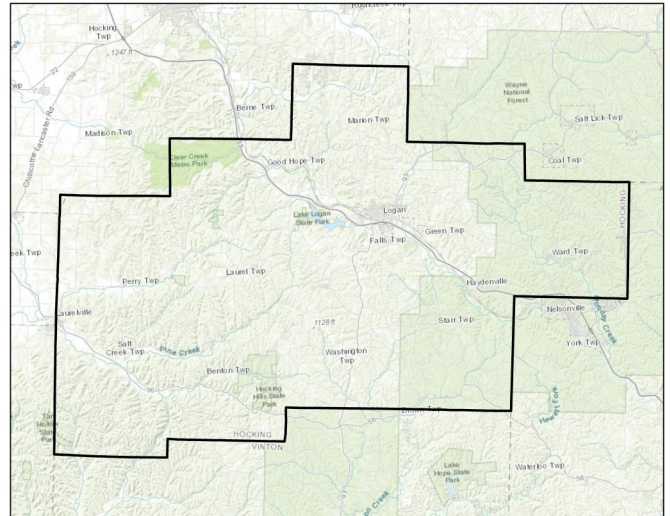
In Labor Force	13,518
Unemployment rate	9.1%

Poverty

Poverty rate:	16.6%
Under 18	24.1%
Families	12.6%
Families with female head of house	36.0%

Housing

Total Units	13,279
Percent Owner Occupied	73.7%
Percent of Owner Occ. with Mortgage	56.7%
Median Gross Rental Cost	\$569



Hocking County, OH
SEO FOODLINK
 A PROJECT OF COMMUNITY FOOD INITIATIVES

Resource Summary

Food Assistance Programming

Total Agencies:	10
Food Pantries	1
Congregate Meals	0
Backpack Programs	0
Summer Feeding	9

SNAP

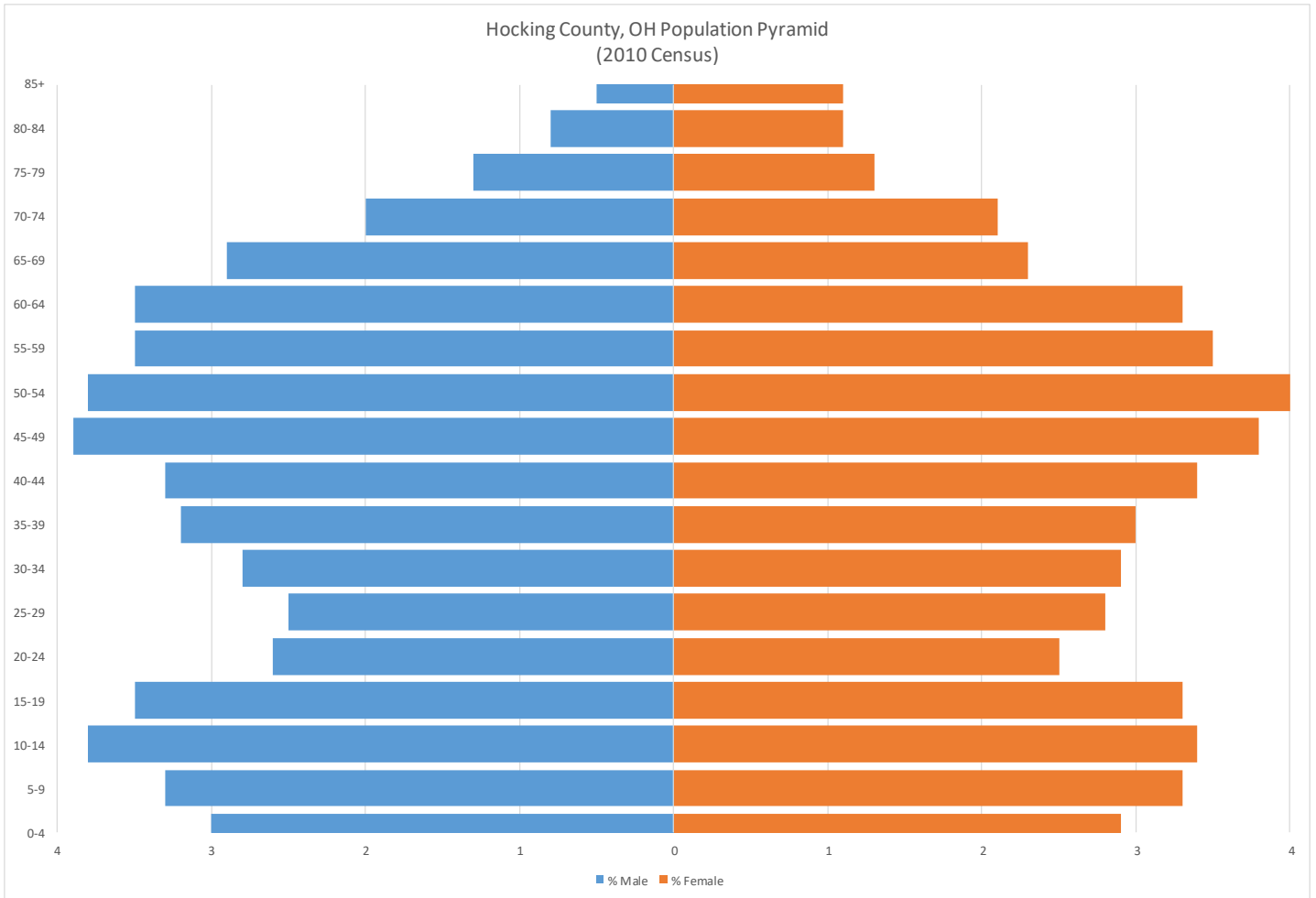
Monthly Enrollment Average	24,753+
Monthly Disbursements (average)	\$2,877,343+
SNAP Retailers	21
Participation rate	21%

WIC

Monthly Caseload Average	670
WIC Retailers	2

Free and Reduced School Meal Programs

Eligible Students:	2,689
Eligible Student Percentage	64%
Schools Participating in CEP	0



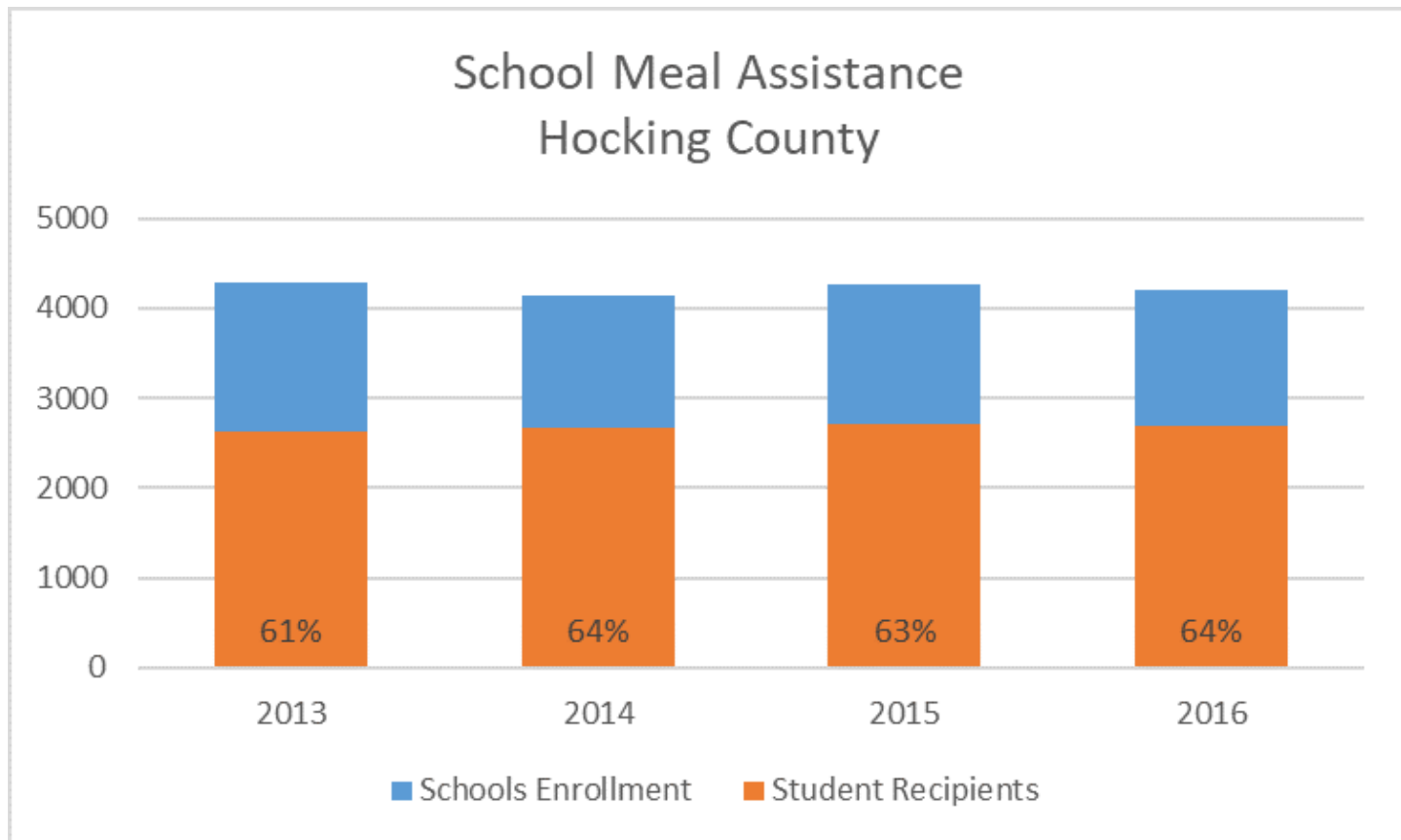
SNAP (2016)	Hocking County 2016	SEO County Average	SEO County Rank
Cases Assisted	12,072†	3,497	1st†
Individuals Enrolled	24,753†	7,330	1st†
Children Enrolled	0†	2,803	9th†
Adults Enrolled	0†	4,794	9th†
Percent of Population Enrolled	21%	18%	3rd
Total Average Monthly Disbursed	\$2,877,343†	\$1,075,871	1st†
Average Stamps Issued	\$116†	\$116	5th†

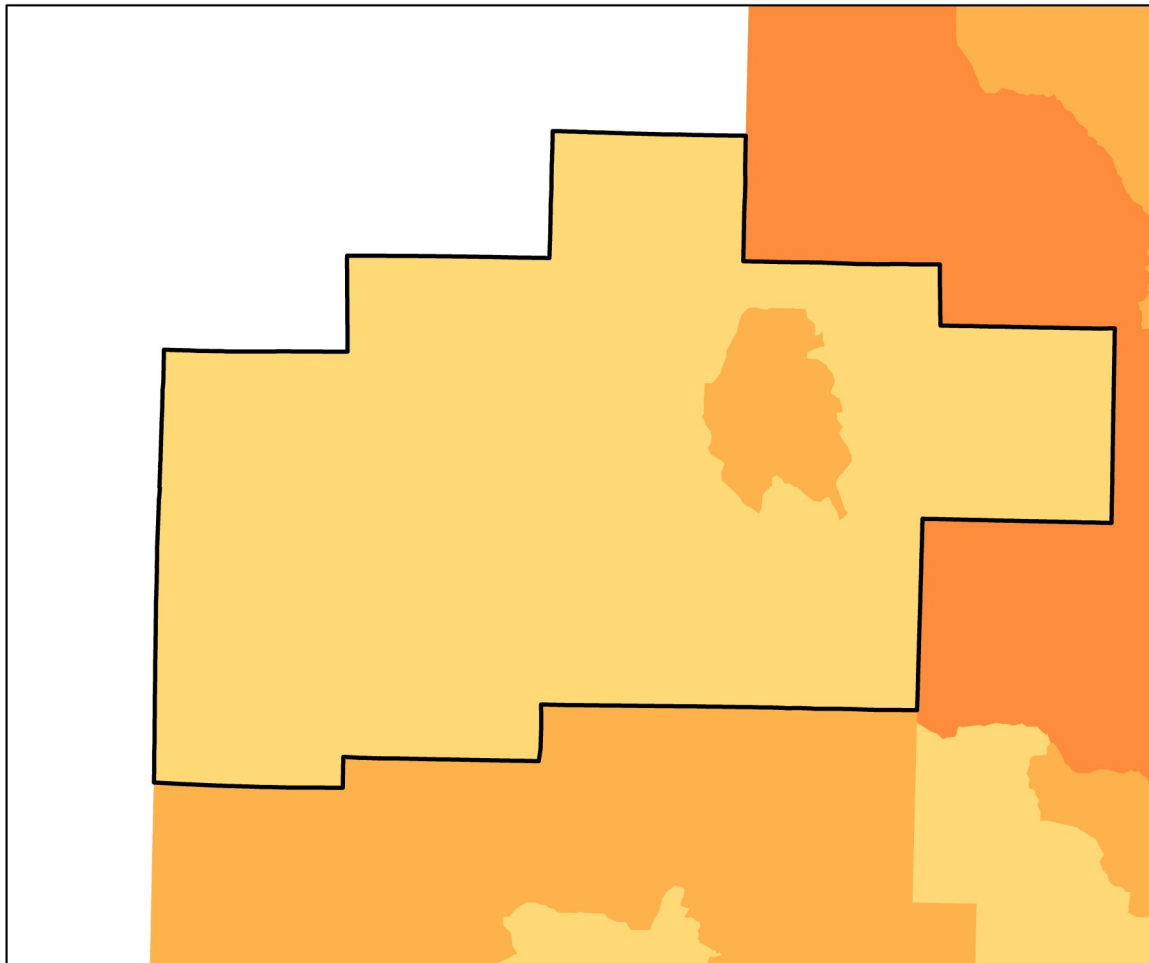
WIC (2016)	Hocking County 2016	SEO County Average 2016	SEO County Rank
Average Monthly Cases*	670	816	7th
Caseload as a Percentage of Residents	2.3%	2.4%	6th

† Combined totals for Hocking, Ross and Vinton counties

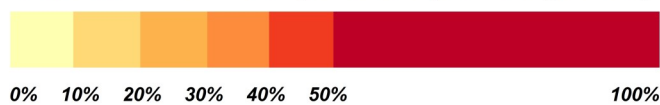
*Not all cases are county residents

	Hocking County 2016	SEO County Average 2016
Schools	7	14
Schools Participating in CEP	0	5
Percent of Schools Participating in CEP	0%	36%
Enrollment	4,208	5,724
Students Eligible for Meal Assistance	2,689	1,852
Percent Eligible for Assistance	64%	34%





Estimated Percent of Population Experiencing Poverty

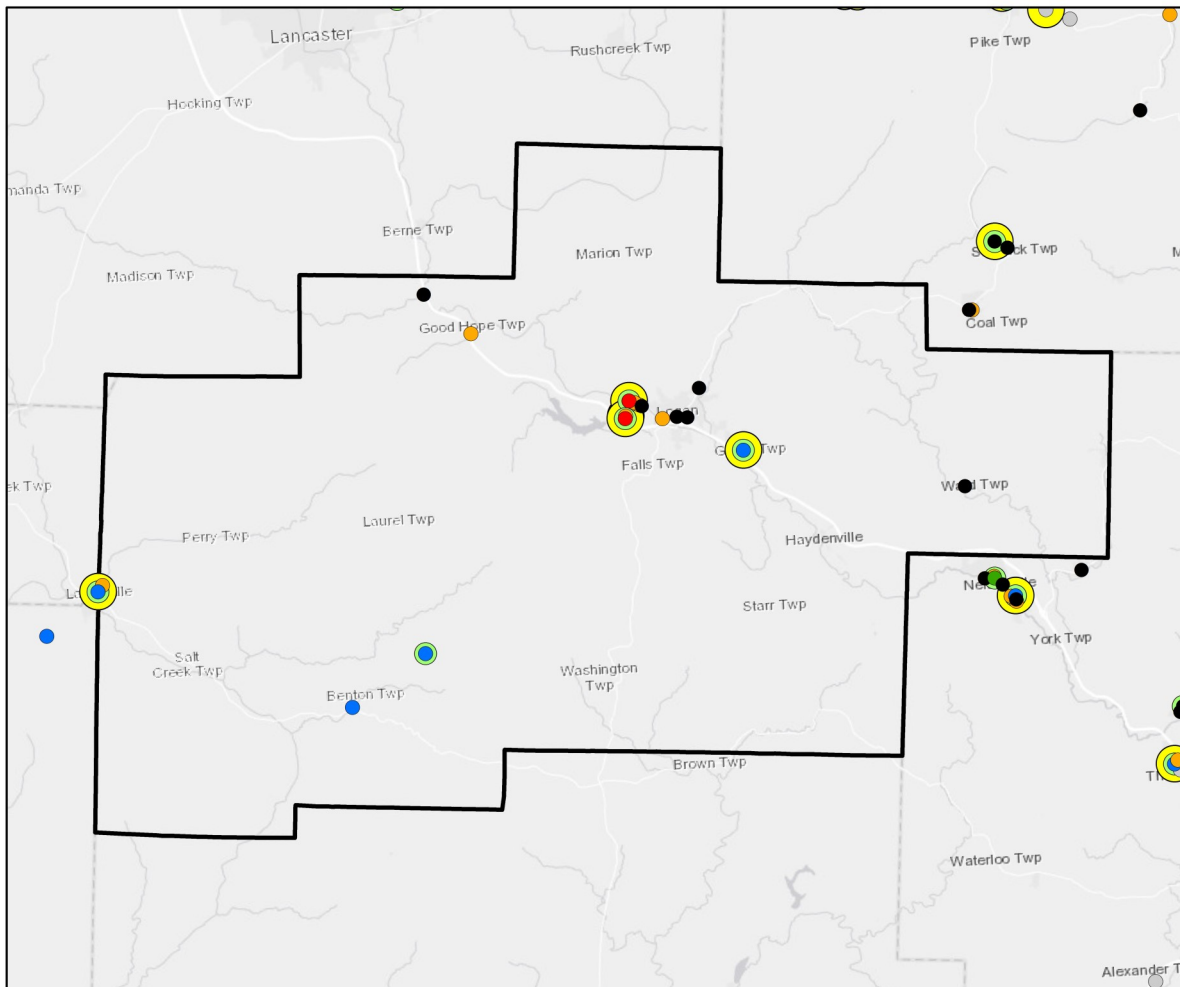


Hocking County, OH

SEO FOODLINK - 2018

2016 Census ACS Annual Estimate

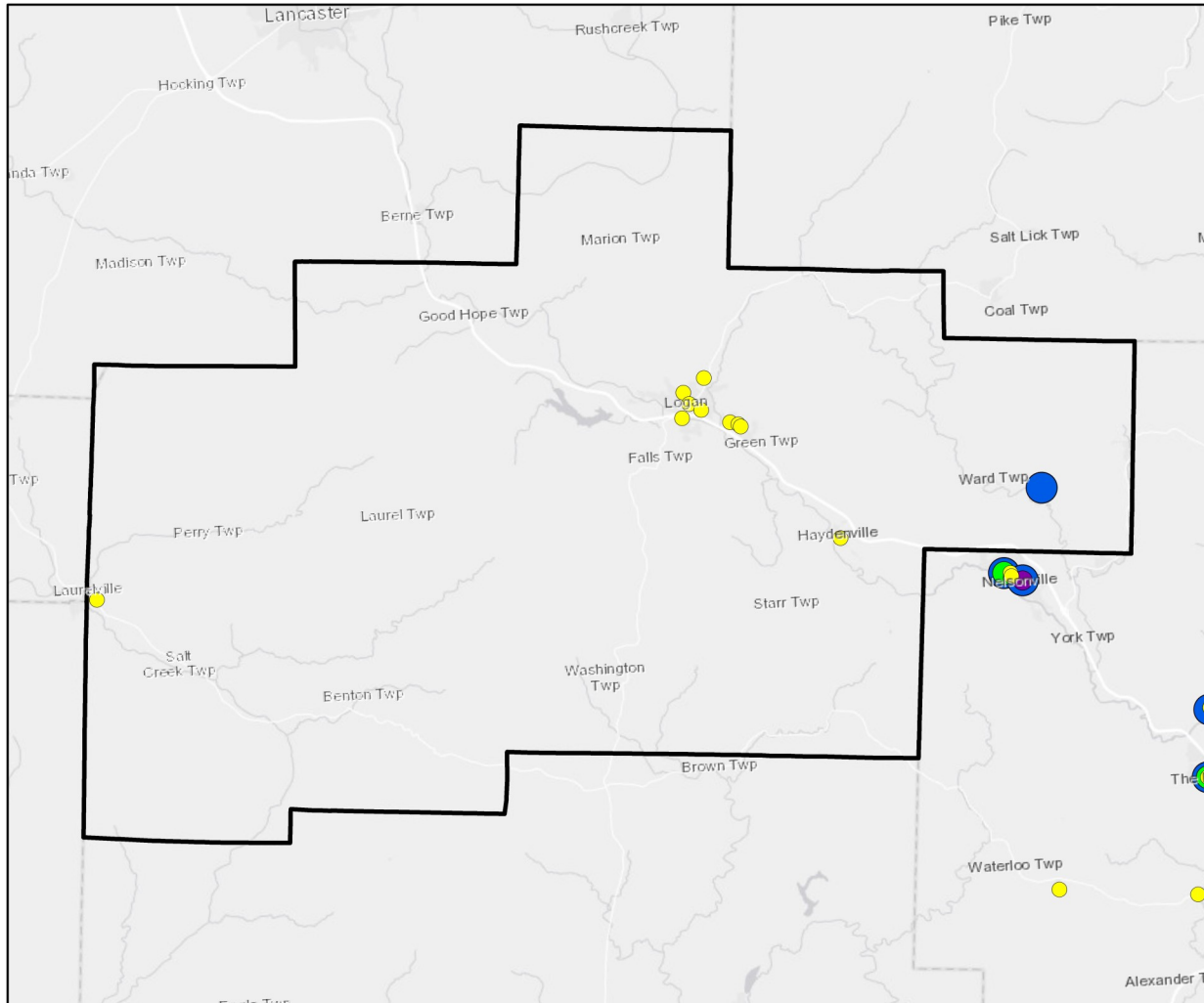
	Hocking County	Ohio	United States
2016 Population Estimate	28,690	11,586,941	318,558,162
Percent in Poverty	16.6%	15.4%	15.1%
Unemployment Rate	9.1%	7.2%	7.4%
Median Household Income	\$43,382	\$50,674	\$55,322



- Big Box
- Grocery Store
- Small Box
- Convenience Store
- Specialty
- Farmer's Market
- Fresh Produce
- Accepts WIC

Hocking County, OH Retail Locations Accepting SNAP

Service Provider	Total in County	WIC	Fresh Produce
Big Box Retailers	2	2	2
Grocery Stores	4	2	3
Small Box Retailers	6	0	0
Convenience Store	7	0	0
Farmers Market	0	0	0
Specialty	0	0	0
Total	19	4	5

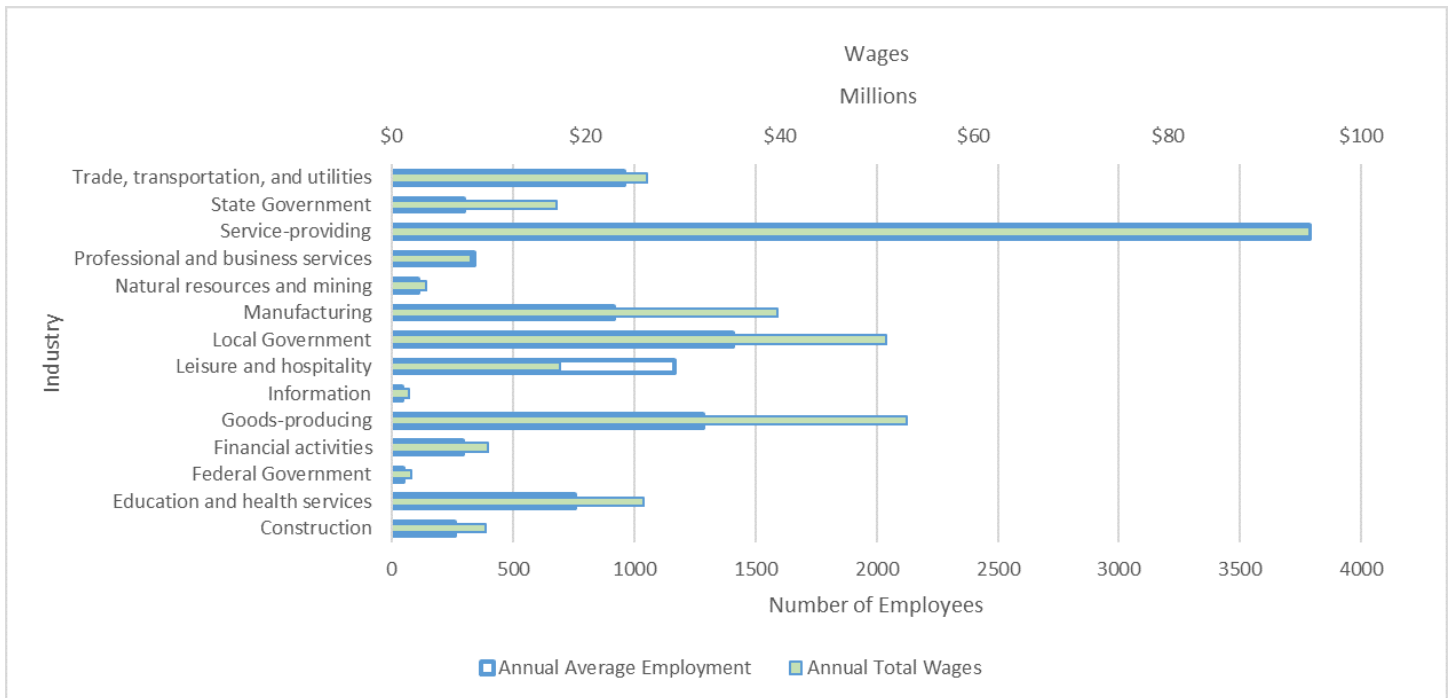
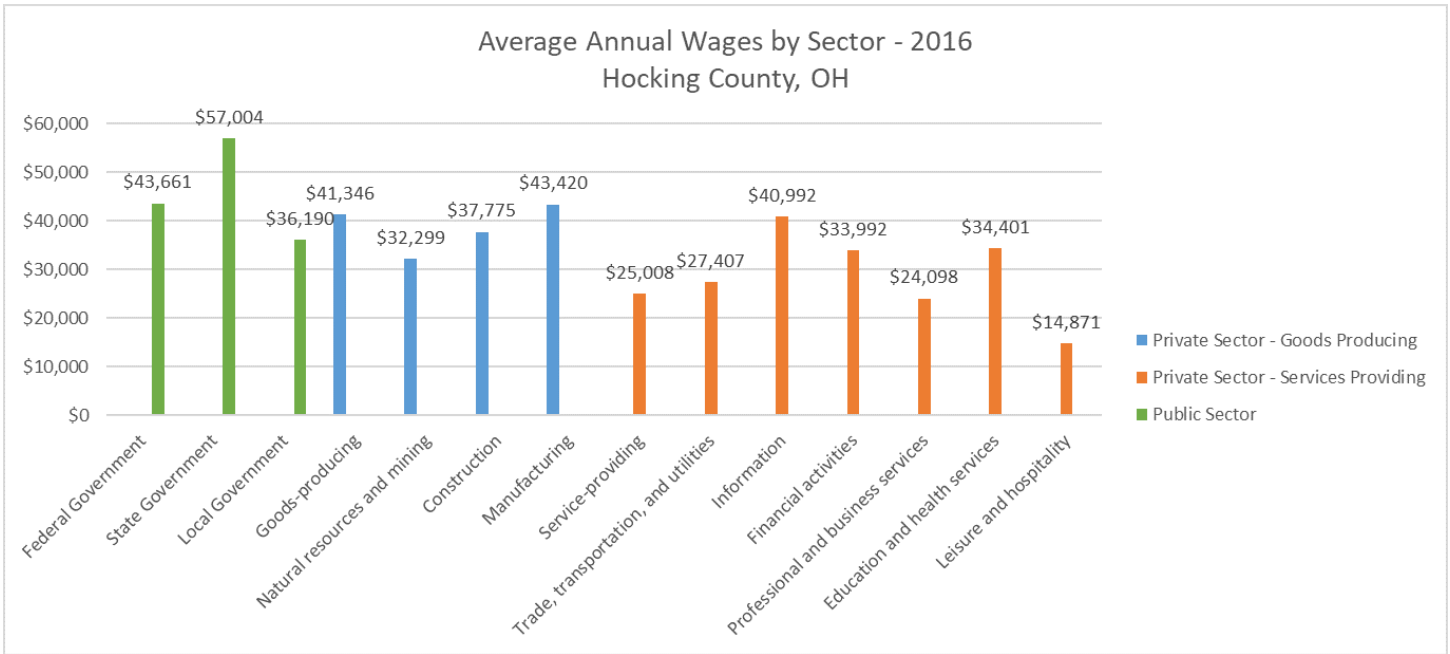


- Summer Feeding Program
- Back Pack Program
- Congregate Meals Services
- Food Pantry

Hocking County, OH

Charitable Assistance Agencies

Service Provider	Total in County	Monthly Points of Service
Food Pantries	1	45
Congregate Meals Services	0	0
Back Pack Program	0	0
Summer Feeding Program	9	0



This document was produced using data from the SEO Foodlink Database in combination with data from other sources. The SEO Foodlink data pertains to the location and services of Emergency Food Providers and Retailers that accept SNAP and WIC in West Virginia and is available at

<http://foodlink.wvu.edu/>

In addition to our own data, we have brought together and analyzed information obtained from a variety of federal and state agencies as listed below.

US Bureau of Labor Statistics. *2016 Local Area Unemployment Statistics (LAUS)*. <http://www.bls.gov/lau/>

US Census Bureau.

- *2010 Decennial Census*. <http://www.census.gov/>
- *2016 Population Estimate Program*. <http://www.census.gov/popest/>
- *2016 Small Area Income and Population Estimates (SAIPE)*. <http://www.census.gov/did/www/saipe/>
- *2016 Census ACS 5-year Estimates*. <http://www.census.gov/programs-surveys/acs/>

US Department of Agriculture, Economic Research Service. 2010 and 2014 Food Access Data.

<http://www.ers.usda.gov/data-products/food-access-research-atlas/.aspx>

Ohio Department of Job and Family Services. Public Assistance Monthly Statistics (PAMS) Report.

<http://jfs.ohio.gov/pams/archive.stm>

Ohio Department of Education. Data for Free and Reduced Price Meal Eligibility.

<http://education.ohio.gov/Topics/Other-Resources/Food-and-Nutrition/Resources-and-Tools-for-Food-and-Nutrition/MR81-Data-for-Free-and-Reduced-Price-Meal-Eligibil>

Ohio Department of Health . WIC Data available via data request. <http://www.odh.ohio.gov/>