

Demographic Summary

Population

| | |
|------------------------------|----------|
| 2016 Population | 30,015 |
| 2016 Age Distributions: | |
| Median Age | 40.5 |
| Under 18 | 6,939 |
| 18-64 | 17,774 |
| 65 and over | 5,302 |
| 2016 Median Household Income | \$39,423 |

Employment

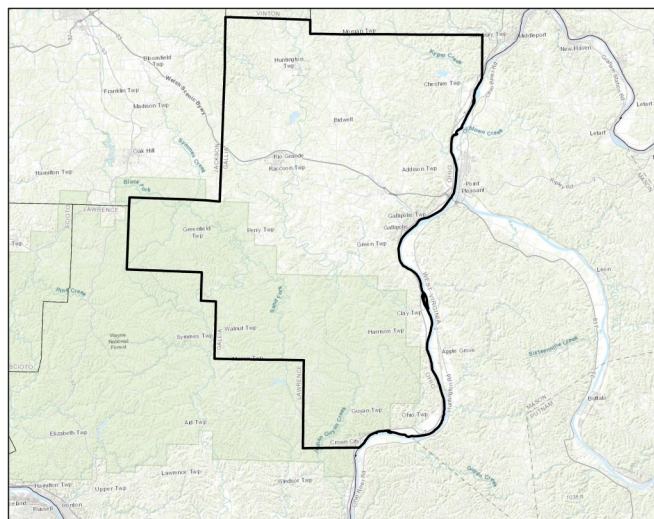
| | |
|-------------------|--------|
| In Labor Force | 12,417 |
| Unemployment rate | 7.2% |

Poverty

| | |
|------------------------------------|-------|
| Poverty rate: | 21.4% |
| Under 18 | 29.8% |
| Families | 16.1% |
| Families with female head of house | 45.9% |

Housing

| | |
|-------------------------------------|--------|
| Total Units | 13,727 |
| Percent Owner Occupied | 74.8% |
| Percent of Owner Occ. with Mortgage | 43.8% |
| Median Gross Rental Cost | \$642 |



Gallia County, OH
SEO FOODLINK
 A PROJECT OF COMMUNITY FOOD INITIATIVES

Resource Summary

Food Assistance Programming

| | |
|-------------------|----|
| Total Agencies: | 18 |
| Food Pantries | 4 |
| Congregate Meals | 2 |
| Backpack Programs | 1 |
| Summer Feeding | 11 |

SNAP

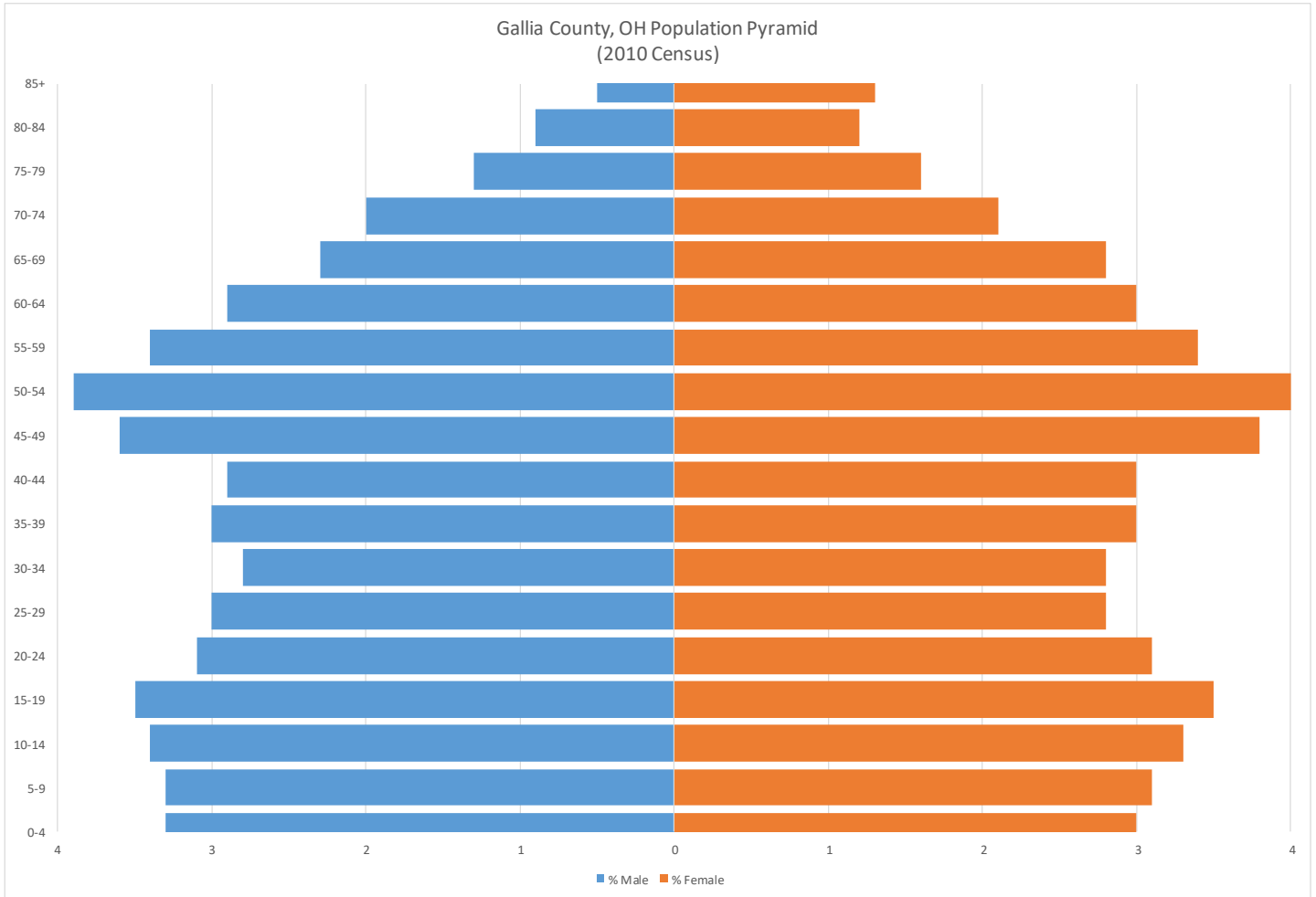
| | |
|---------------------------------|-----------|
| Monthly Enrollment Average | 588 |
| Monthly Disbursements (average) | \$851,537 |
| SNAP Retailers | 42 |
| Participation rate | 24% |

WIC

| | |
|--------------------------|-----|
| Monthly Caseload Average | 912 |
| WIC Retailers | 1 |

Free and Reduced School Meal Programs

| | |
|------------------------------|-------|
| Eligible Students: | 1,195 |
| Eligible Student Percentage | 25% |
| Schools Participating in CEP | 10 |

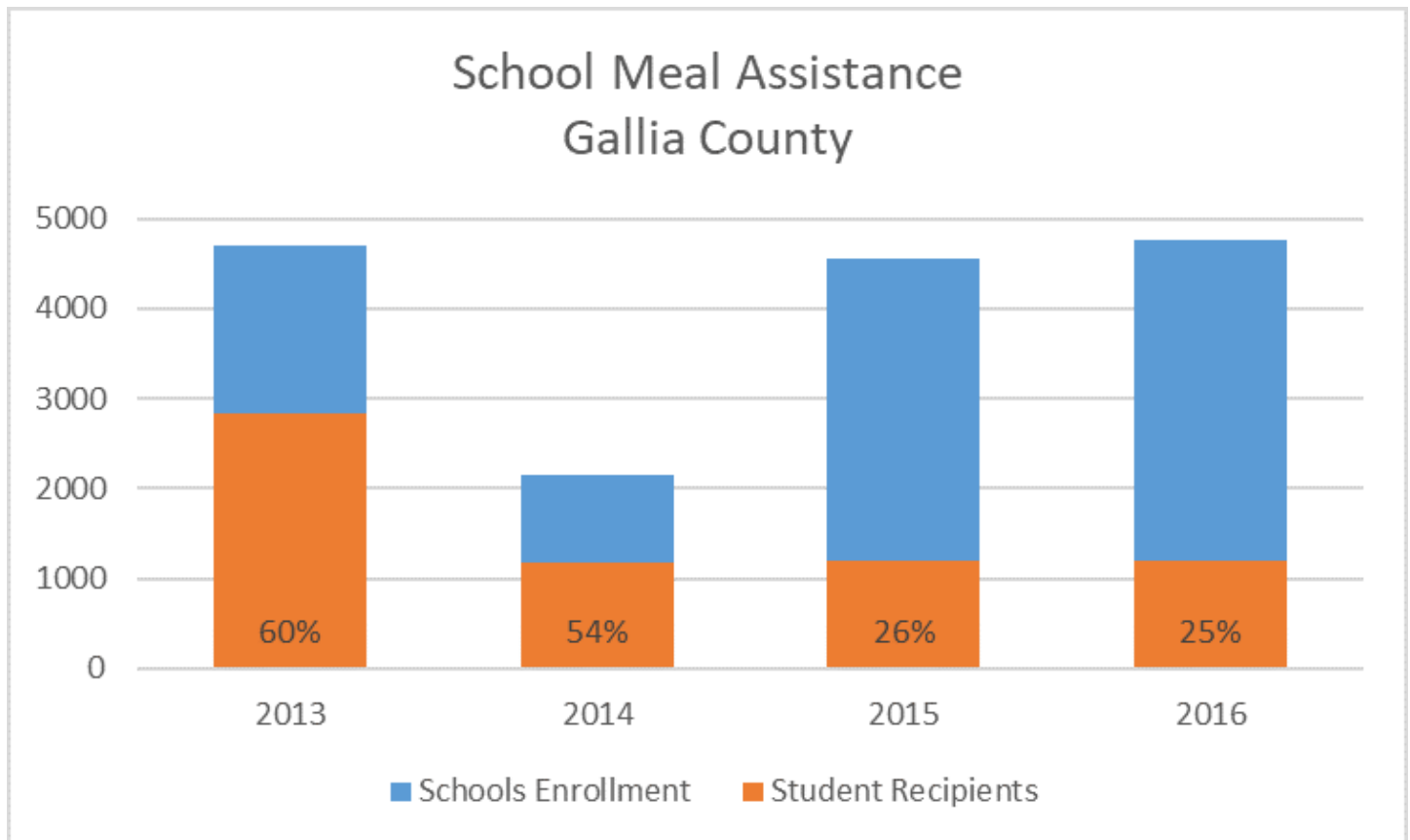


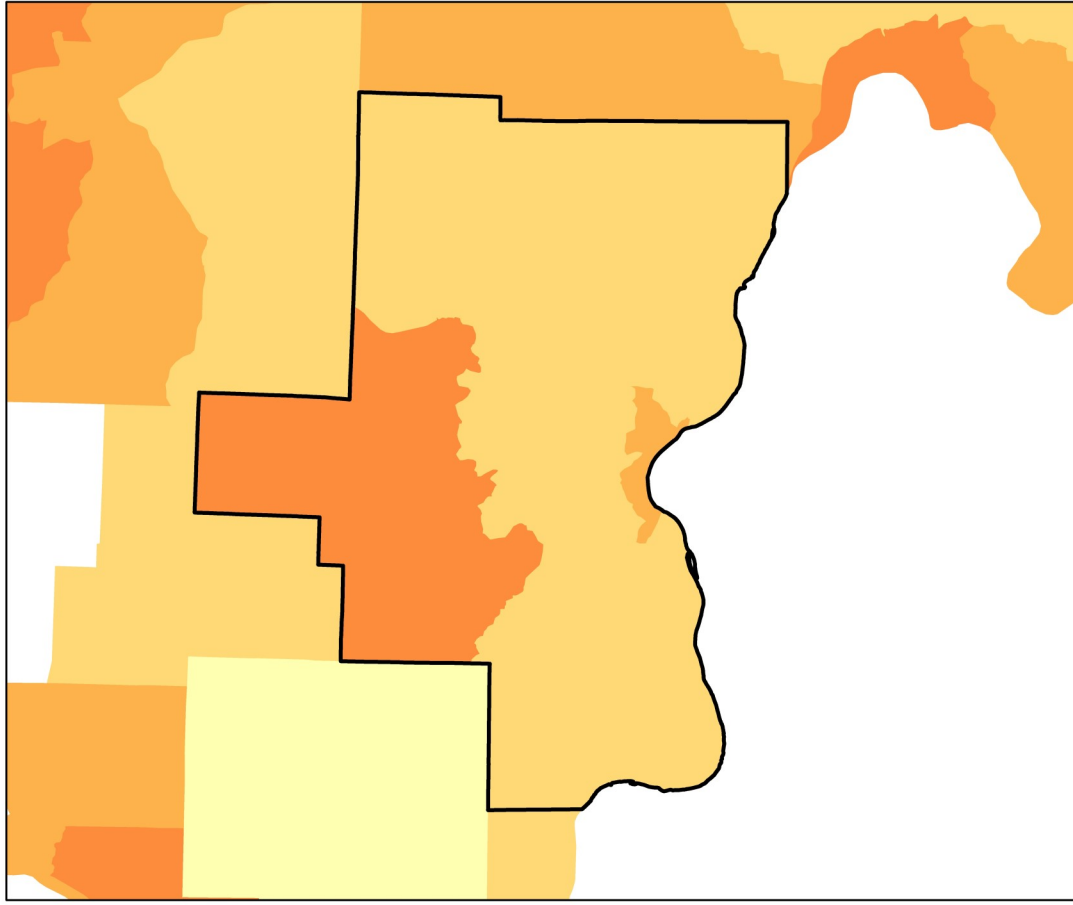
| SNAP (2016) | Gallia County 2016 | SEO County Average | SEO County Rank |
|---------------------------------|--------------------|--------------------|-----------------|
| Cases Assisted | 3,511 | 3,497 | 5th |
| Individuals Enrolled | 7,058 | 7,330 | 6th |
| Children Enrolled | 2,708 | 2,803 | 4th |
| Adults Enrolled | 4,716 | 4,794 | 4th |
| Percent of Population Enrolled | 24% | 18% | 1st |
| Total Average Monthly Disbursed | \$851,537 | \$1,075,871 | 4th |
| Average Stamps Issued | \$121 | \$116 | 1st |

| WIC (2016) | Gallia County 2016 | SEO County Average 2016 | SEO County Rank |
|---------------------------------------|--------------------|-------------------------|-----------------|
| Average Monthly Cases* | 912 | 816 | 4th |
| Caseload as a Percentage of Residents | 3.0% | 2.4% | 2nd |

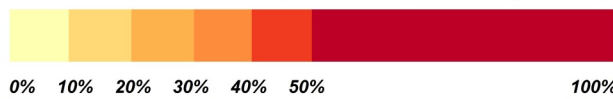
*Not all cases are county residents

| | Gallia County 2016 | SEO County Average 2016 |
|---|-----------------------|-------------------------------|
| Schools | 13 | 14 |
| Schools Participating in CEP | 10 | 5 |
| Percent of Schools Participating in CEP | 77% | 36% |
| Enrollment | 4,755 | 5,724 |
| Students Eligible for Meal Assistance | 1,195 | 1,852 |
| Percent Eligible for Assistance | 25% | 34% |





Estimated Percent of Population Experiencing Poverty

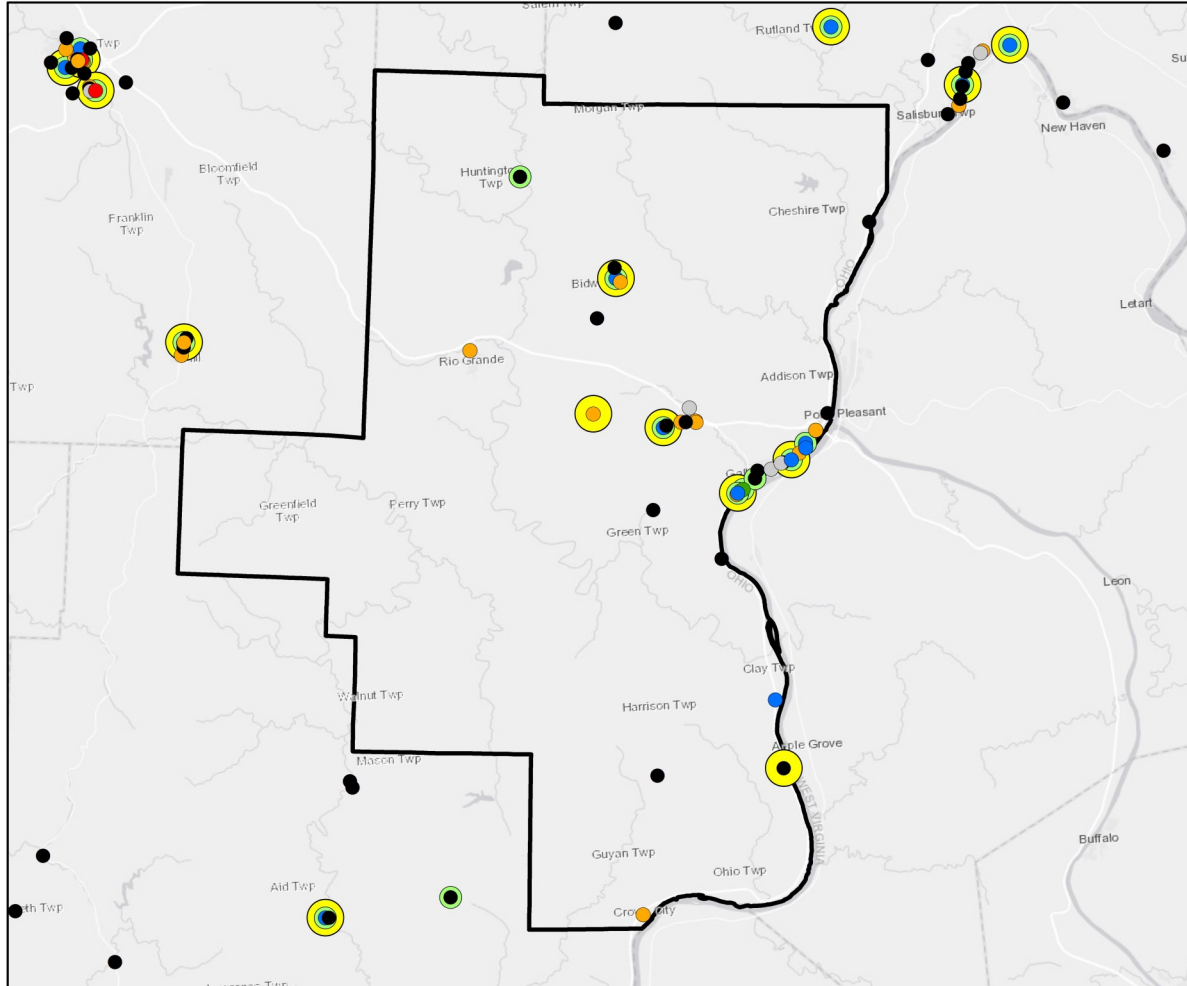


Gallia County, OH

SEO FOODLINK - 2018

2016 Census ACS Annual Estimate

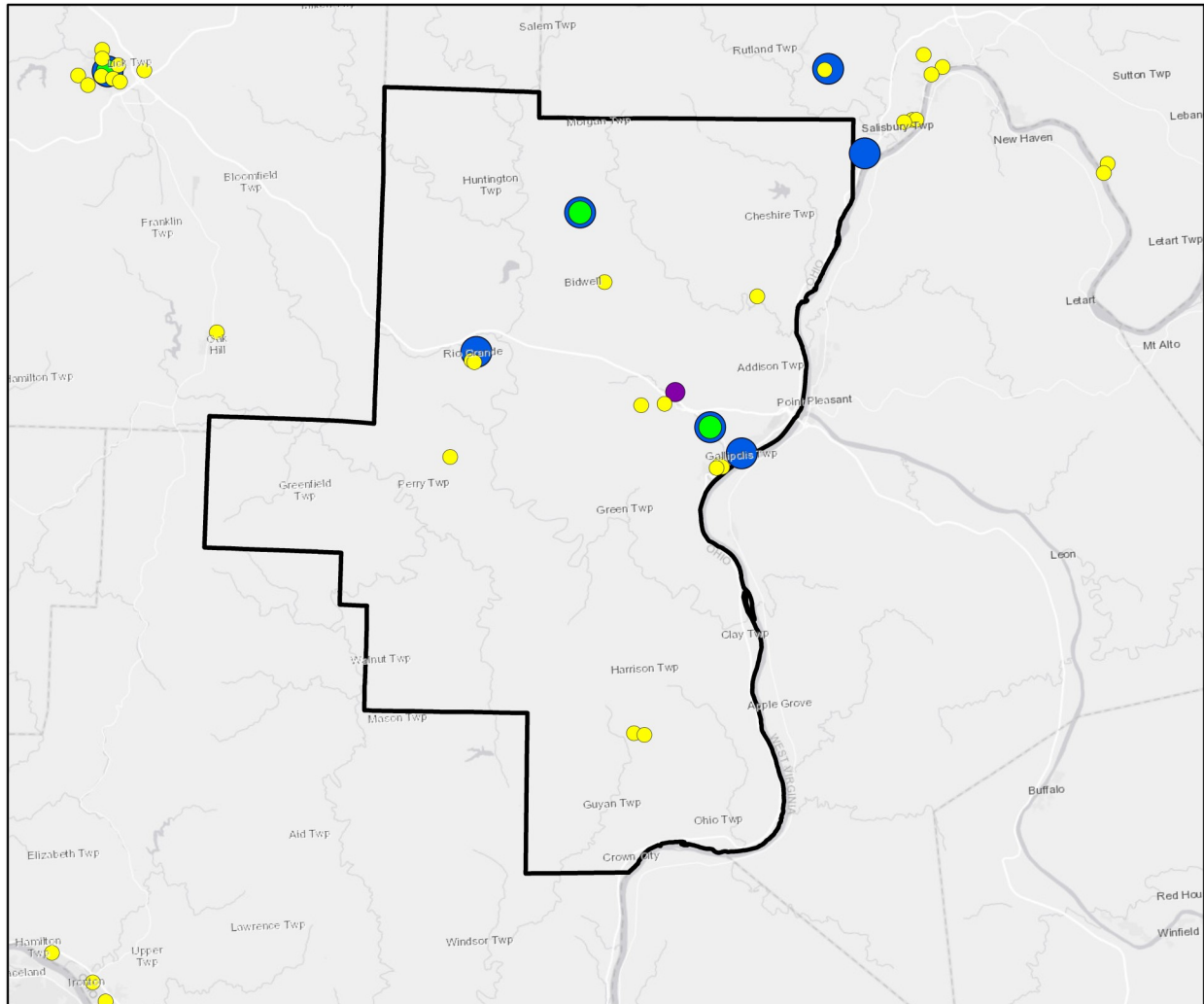
| | Gallia County | Ohio | United States |
|--------------------------|---------------|------------|---------------|
| 2016 Population Estimate | 30,015 | 11,586,941 | 318,558,162 |
| Percent in Poverty | 21.4% | 15.4% | 15.1% |
| Unemployment Rate | 7.2% | 7.2% | 7.4% |
| Median Household Income | \$39,423 | \$50,674 | \$55,322 |



- Big Box
- Grocery Store
- Small Box
- Convenience Store
- Specialty
- Farmer's Market
- Fresh Produce
- Accepts WIC

Gallia County, OH Retail Locations Accepting SNAP

| Service Provider | Total in County | WIC | Fresh Produce |
|---------------------|-----------------|----------|---------------|
| Big Box Retailers | 0 | 0 | 0 |
| Grocery Stores | 7 | 4 | 5 |
| Small Box Retailers | 13 | 0 | 0 |
| Convenience Store | 14 | 1 | 2 |
| Farmers Market | 1 | 0 | 1 |
| Specialty | 3 | 0 | 0 |
| Total | 38 | 4 | 8 |



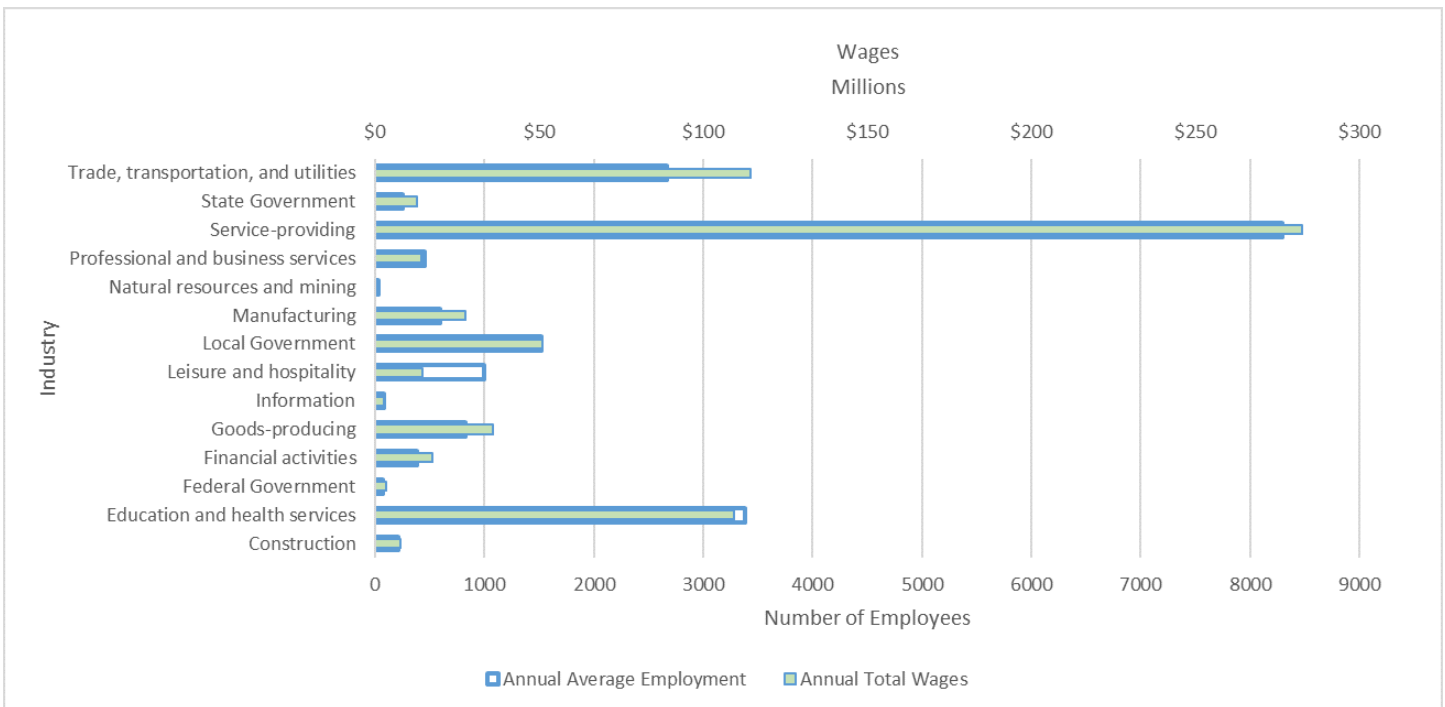
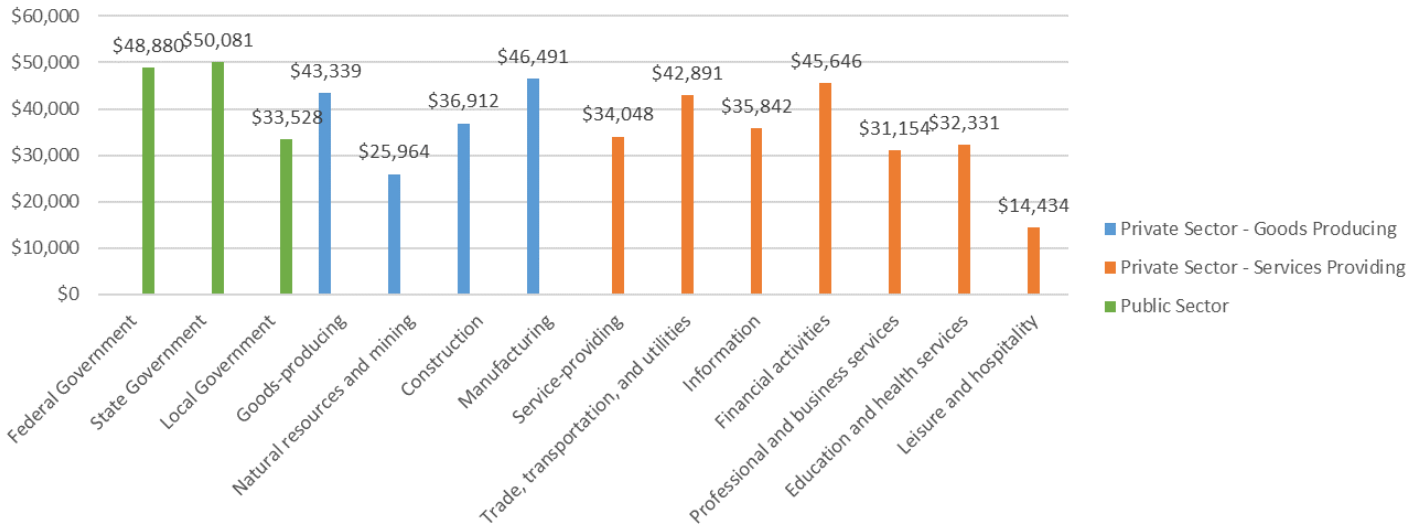
- Summer Feeding Program
- Back Pack Program
- Congregate Meals Services
- Food Pantry

Gallia County, OH

Charitable Assistance Agencies

| Service Provider | Total in County | Monthly Points of Service |
|---------------------------|-----------------|---------------------------|
| Food Pantries | 4 | 1139 |
| Congregate Meals Services | 2 | 3445 |
| Back Pack Program | 1 | 750 |
| Summer Feeding Program | 11 | 200 |

Average Annual Wages by Sector - 2016
Gallia County, OH



This document was produced using data from the SEO Foodlink Database in combination with data from other sources. The SEO Foodlink data pertains to the location and services of Emergency Food Providers and Retailers that accept SNAP and WIC in West Virginia and is available at

<http://foodlink.wvu.edu/>

In addition to our own data, we have brought together and analyzed information obtained from a variety of federal and state agencies as listed below.

US Bureau of Labor Statistics. *2016 Local Area Unemployment Statistics (LAUS)*. <http://www.bls.gov/lau/>

US Census Bureau.

- *2010 Decennial Census*. <http://www.census.gov/>
- *2016 Population Estimate Program*. <http://www.census.gov/popest/>
- *2016 Small Area Income and Population Estimates (SAIPE)*. <http://www.census.gov/did/www/saipe/>
- *2016 Census ACS 5-year Estimates*. <http://www.census.gov/programs-surveys/acs/>

US Department of Agriculture, Economic Research Service. 2010 and 2014 Food Access Data.

<http://www.ers.usda.gov/data-products/food-access-research-atlas/.aspx>

Ohio Department of Job and Family Services. Public Assistance Monthly Statistics (PAMS) Report.

<http://jfs.ohio.gov/pams/archive.stm>

Ohio Department of Education. Data for Free and Reduced Price Meal Eligibility.

<http://education.ohio.gov/Topics/Other-Resources/Food-and-Nutrition/Resources-and-Tools-for-Food-and-Nutrition/MR81-Data-for-Free-and-Reduced-Price-Meal-Eligibil>

Ohio Department of Health . WIC Data available via data request. <http://www.odh.ohio.gov/>