

Demographic Summary

Population

2016 Population	23,125
2016 Age Distributions:	
Median Age	43.7
Under 18	4,970
18-64	13,816
65 and over	4,339
2016 Median Household Income	\$39,640

Employment

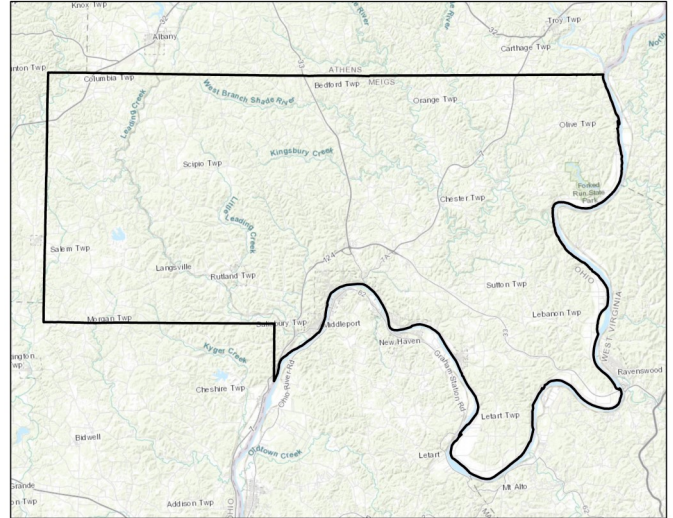
In Labor Force	9,939
Unemployment rate	11.2%

Poverty

Poverty rate:	22.8%
Under 18	28.7%
Families	18.4%
Families with female head of house	41.4%

Housing

Total Units	11,004
Percent Owner Occupied	77.6%
Percent of Owner Occ. with Mortgage	46.2%
Median Gross Rental Cost	\$585



Resource Summary

Food Assistance Programming

Total Agencies:	8
Food Pantries	3
Congregate Meals	0
Backpack Programs	0
Summer Feeding	5

SNAP

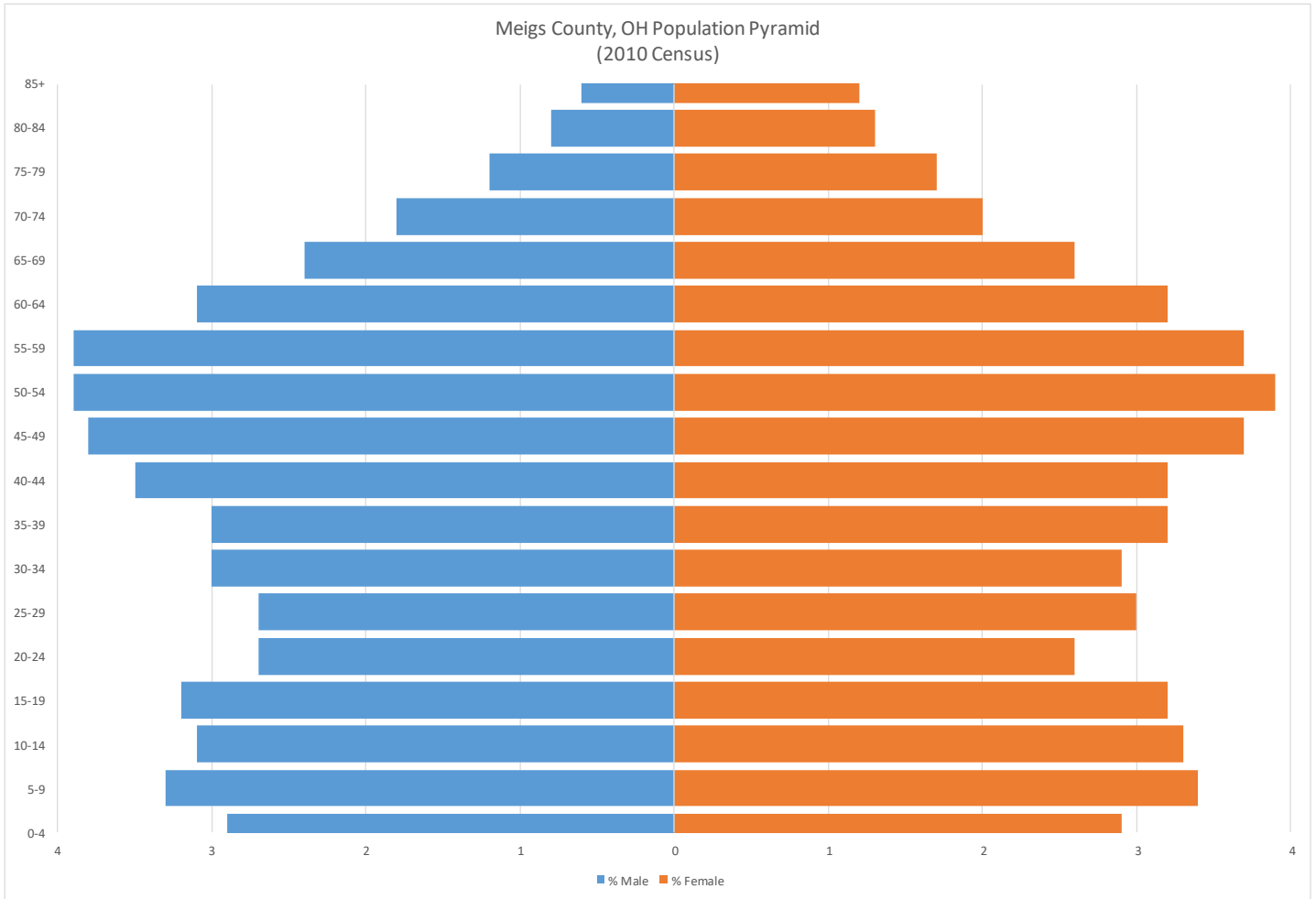
Monthly Enrollment Average	467
Monthly Disbursements (average)	\$663,053
SNAP Retailers	26
Participation rate	24%

WIC

Monthly Caseload Average	470
WIC Retailers	3

Free and Reduced School Meal Programs

Eligible Students:	581
Eligible Student Percentage	15%
Schools Participating in CEP	6

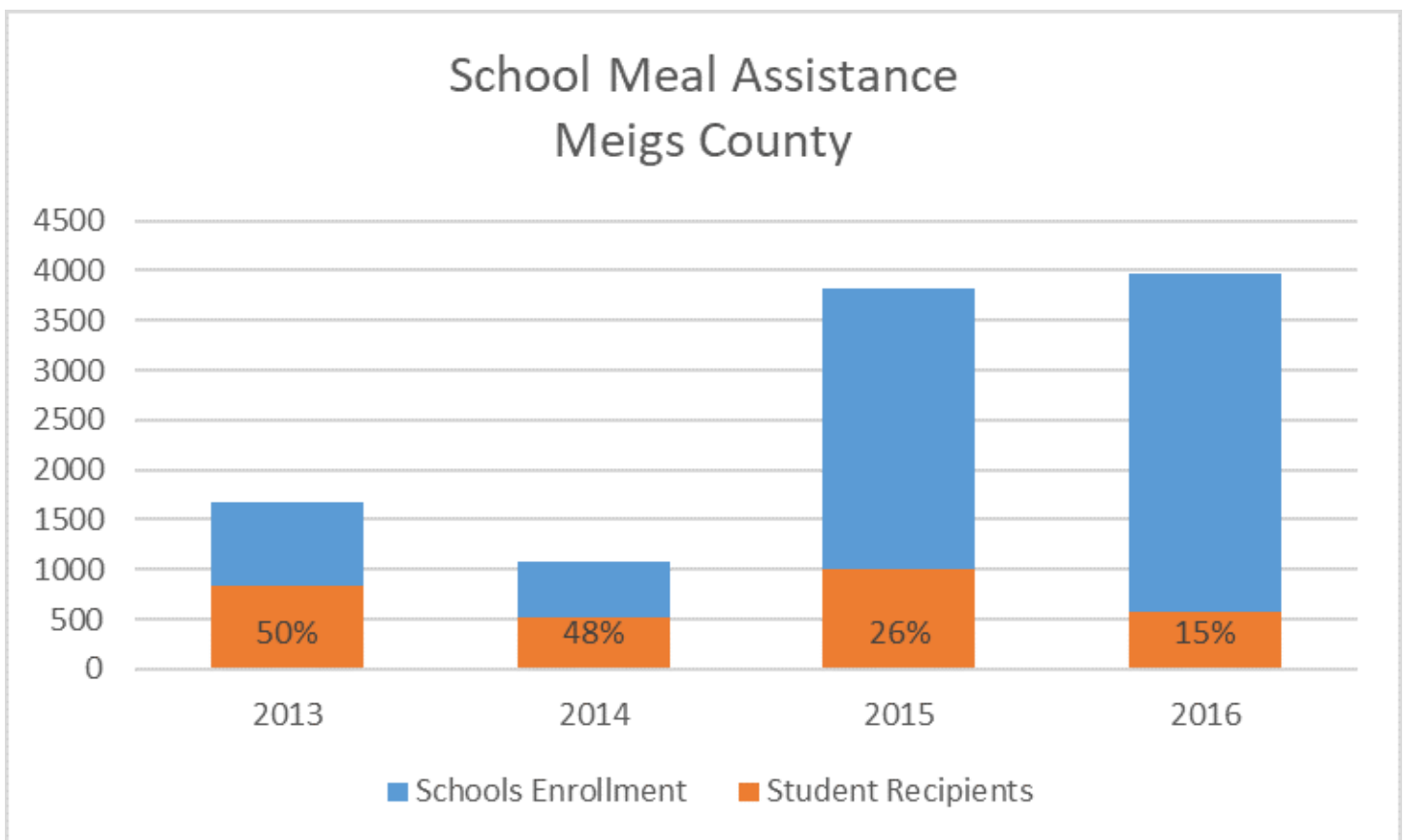


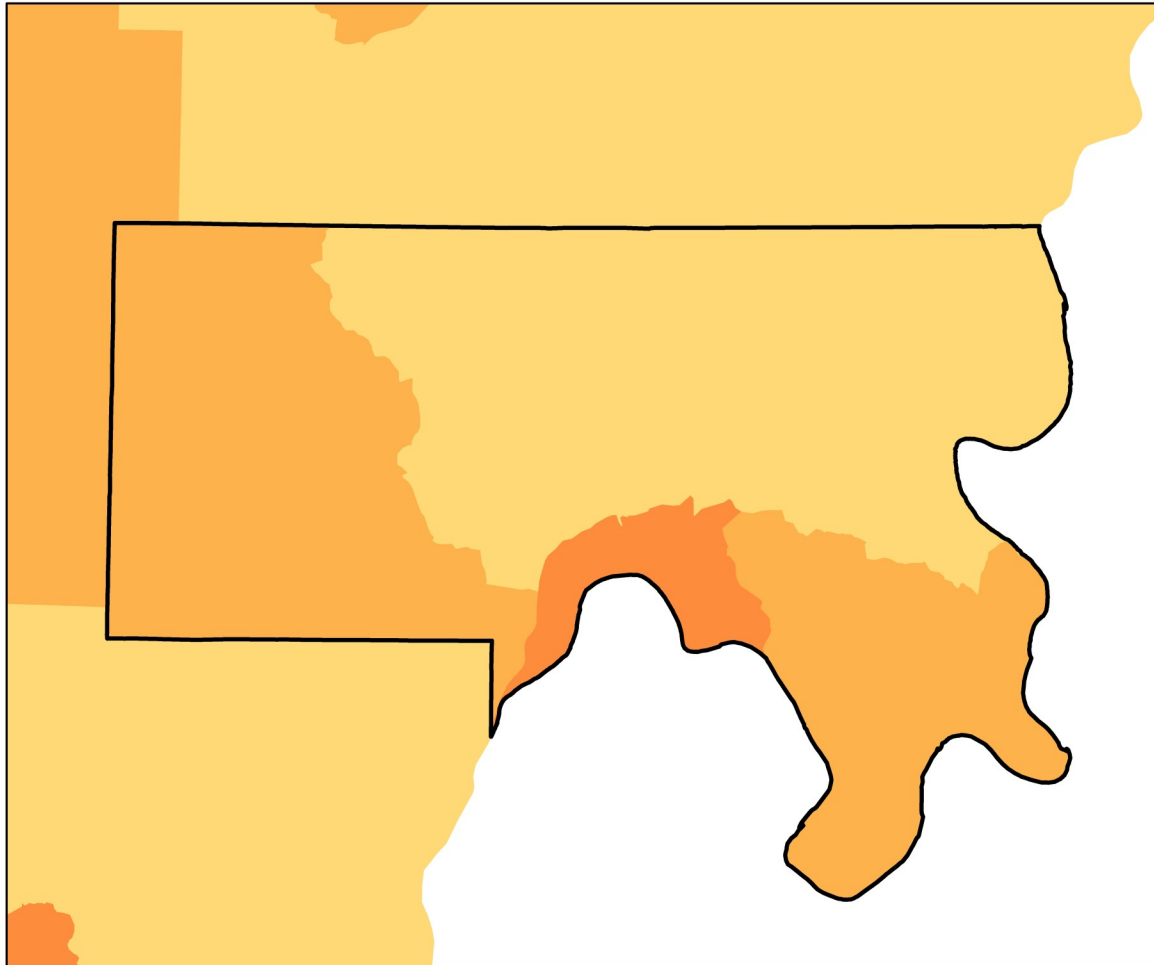
SNAP (2016)	Meigs County 2016	SEO County Average	SEO County Rank
Cases Assisted	2,801	3,497	7th
Individuals Enrolled	5,602	7,330	9th
Children Enrolled	2,027	2,803	7th
Adults Enrolled	3,717	4,794	7th
Percent of Population Enrolled	24%	18%	1st
Total Average Monthly Disbursed	\$663,053	\$1,075,871	8th
Average Stamps Issued	\$118	\$116	2nd

WIC (2016)	Meigs County 2016	SEO County Average 2016	SEO County Rank
Average Monthly Cases*	470	816	8th
Caseload as a Percentage of Residents	2.0%	2.4%	8th

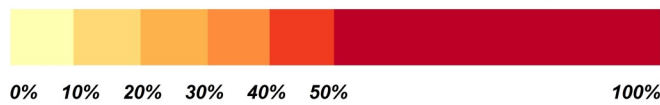
*Not all cases are county residents

	Meigs County 2016	SEO County Average 2016
Schools	10	14
Schools Participating in CEP	6	5
Percent of Schools Participating in CEP	60%	36%
Enrollment	3,974	5,724
Students Eligible for Meal Assistance	581	1,852
Percent Eligible for Assistance	15%	34%





Estimated Percent of Population Experiencing Poverty

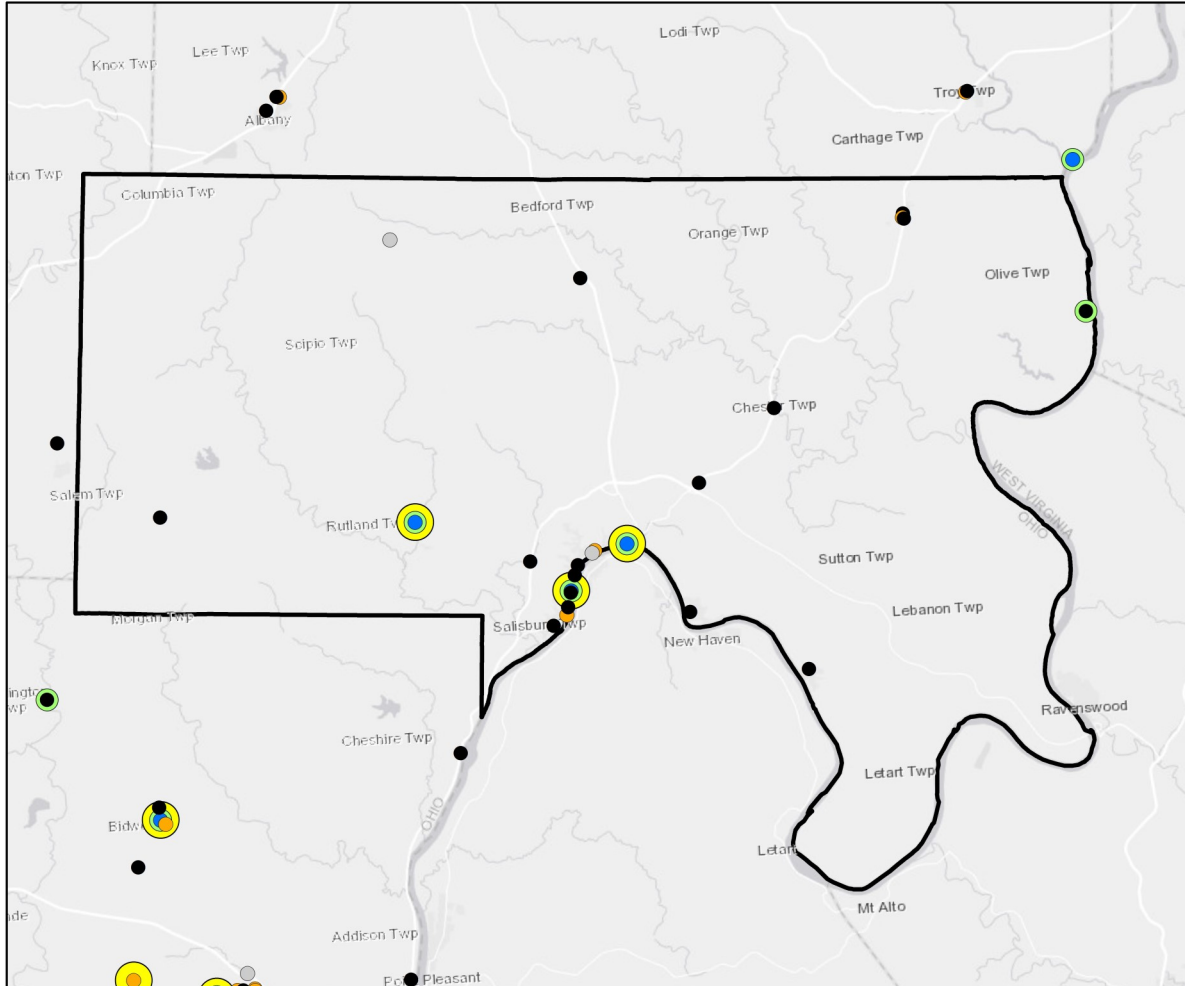


Meigs County, OH

SEO FOODLINK - 2018

2016 Census ACS Annual Estimate

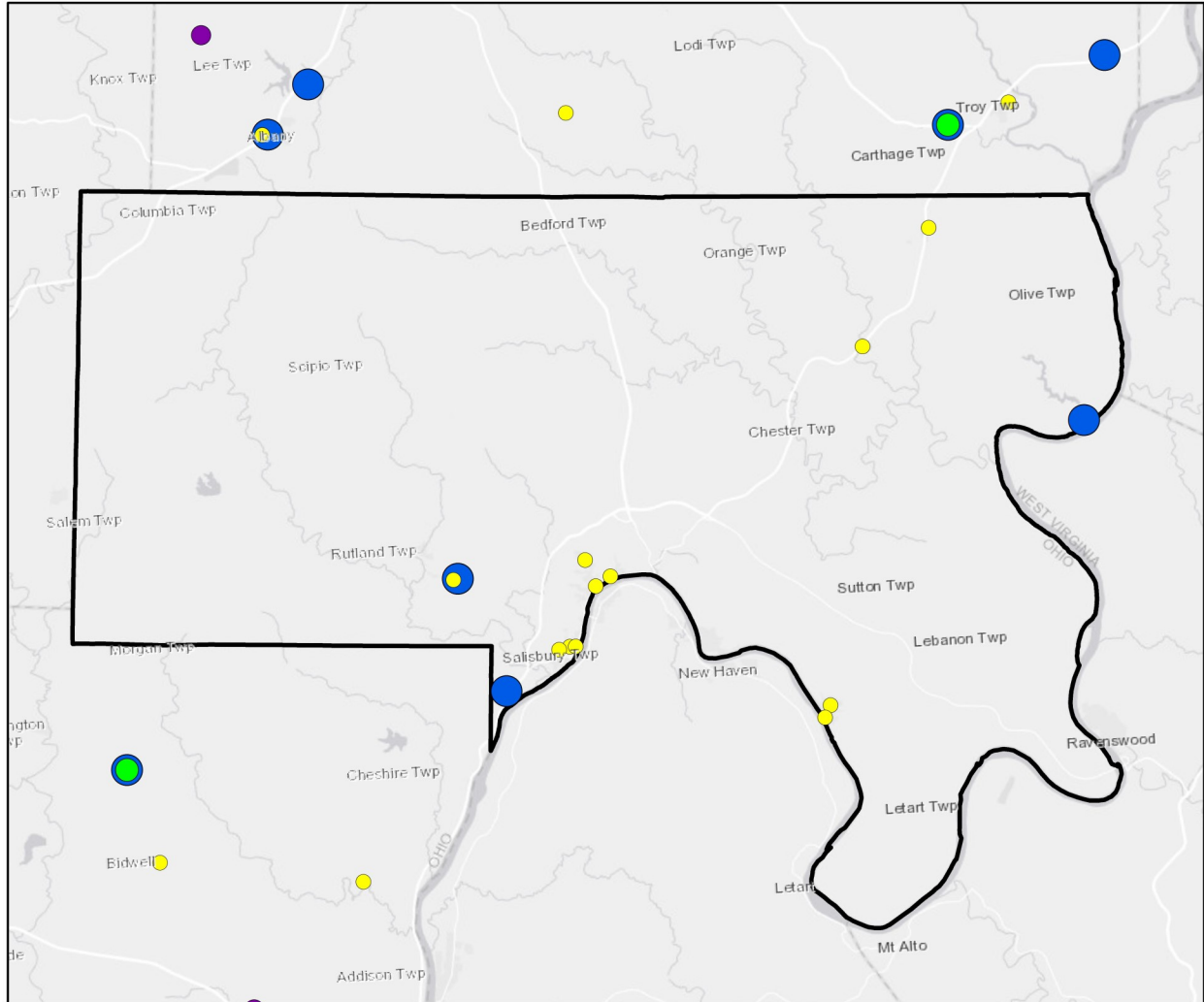
	Meigs County	Ohio	United States
2016 Population Estimate	23,125	11,586,941	318,558,162
Percent in Poverty	22.8%	15.4%	15.1%
Unemployment Rate	11.2%	7.2%	7.4%
Median Household Income	\$39,640	\$50,674	\$55,322



- Big Box
- Grocery Store
- Small Box
- Convenience Store
- Specialty
- Fresh Produce
- Accepts WIC
- Farmer's Market

Meigs County, OH Retail Locations Accepting SNAP

Service Provider	Total in County	WIC	Fresh Produce
Big Box Retailers	0	0	0
Grocery Stores	3	3	3
Small Box Retailers	3	0	0
Convenience Store	15	0	1
Farmers Market	0	0	0
Specialty	2	0	0
Total	23	3	4

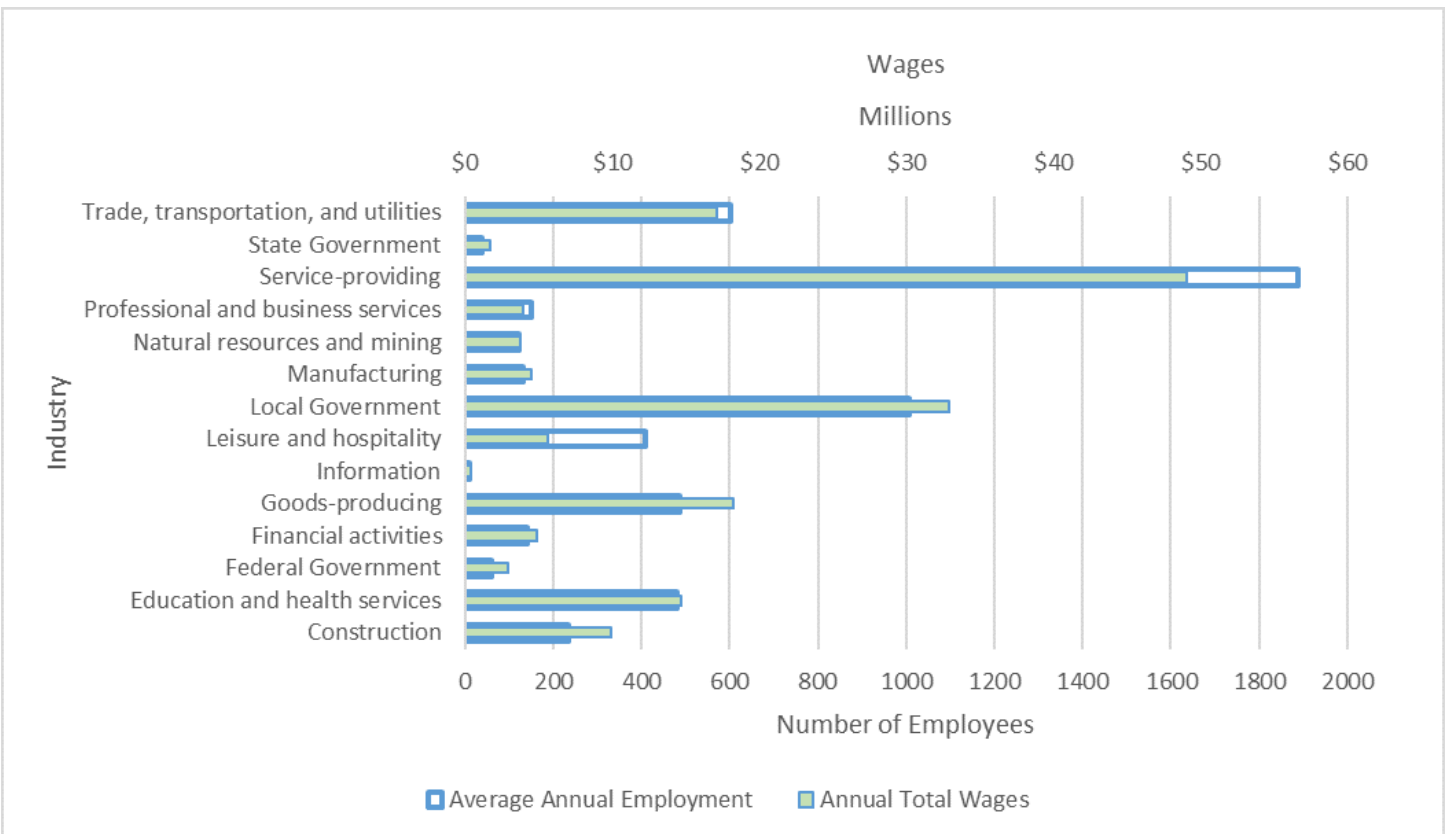
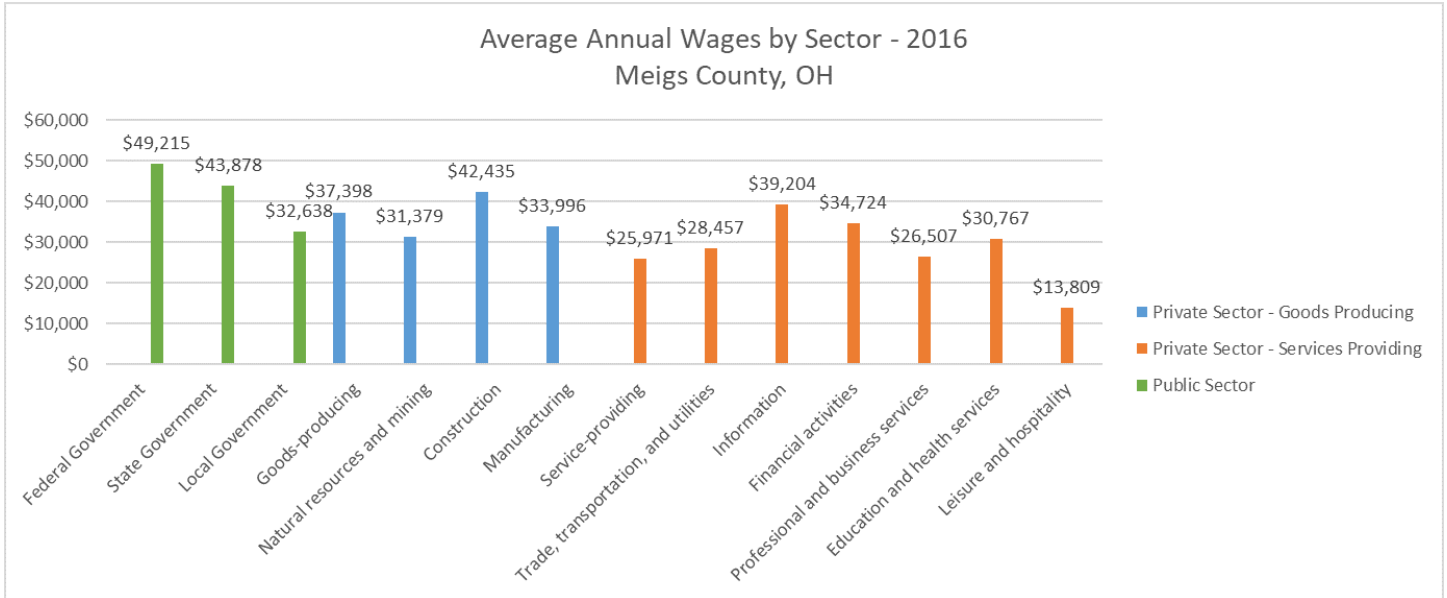


- Summer Feeding Program
- Back Pack Program
- Congregate Meals Services
- Food Pantry

Meigs County, OH

Charitable Assistance Agencies

Service Provider	Total in County	Monthly Points of Service
Food Pantries	3	446
Congregate Meals Services	0	0
Back Pack Program	0	0
Summer Feeding Program	5	100



This document was produced using data from the SEO Foodlink Database in combination with data from other sources. The SEO Foodlink data pertains to the location and services of Emergency Food Providers and Retailers that accept SNAP and WIC in West Virginia and is available at

<http://foodlink.wvu.edu/>

In addition to our own data, we have brought together and analyzed information obtained from a variety of federal and state agencies as listed below.

US Bureau of Labor Statistics. *2016 Local Area Unemployment Statistics (LAUS)*. <http://www.bls.gov/lau/>

US Census Bureau.

- *2010 Decennial Census*. <http://www.census.gov/>
- *2016 Population Estimate Program*. <http://www.census.gov/popest/>
- *2016 Small Area Income and Population Estimates (SAIPE)*. <http://www.census.gov/did/www/saipe/>
- *2016 Census ACS 5-year Estimates*. <http://www.census.gov/programs-surveys/acs/>

US Department of Agriculture, Economic Research Service. 2010 and 2014 Food Access Data.

<http://www.ers.usda.gov/data-products/food-access-research-atlas/.aspx>

Ohio Department of Job and Family Services. Public Assistance Monthly Statistics (PAMS) Report.

<http://jfs.ohio.gov/pams/archive.stm>

Ohio Department of Education. Data for Free and Reduced Price Meal Eligibility.

<http://education.ohio.gov/Topics/Other-Resources/Food-and-Nutrition/Resources-and-Tools-for-Food-and-Nutrition/MR81-Data-for-Free-and-Reduced-Price-Meal-Eligibil>

Ohio Department of Health . WIC Data available via data request. <http://www.odh.ohio.gov/>